

# ROAM JLU ROCK RAILS INSTALLATION GUIDE / INSTRUCTIONS



Online version may be found at:

<https://www.jlwranglerforums.com/forum/threads/roam-jl-rock-rails-mk1-jlu-4-door-install-guide-revision-1-0.25768/>

## PLEASE READ BEFORE YOU START

**TO GUARANTEE A QUALITY INSTALLATION, WE RECOMMEND READING AND UNDERSTANDING THESE INSTRUCTIONS BEFORE BEGINNING ANY WORK. A SUFFICIENT UNDERSTANDING OF MECHANICS IS NECESSARY.**

**THESE INSTRUCTIONS ARE WRITTEN WITH THE ASSUMPTION OF AND REQUIRE MECHANICAL PROFICIENCY AND ARE NOT WRITTEN NOR INTENDED FOR SOMEONE NOT FAMILIAR WITH AUTO REPAIR**

## GENERAL CARE AND MAINTENANCE

To keep your ROAM JL Rock Rails looking great, we recommend:

- Please rinse thoroughly with a pressure washer after extensive exposure to salt, mud, or other corrosive contaminants.
- Please inspect all bolts and fasteners are torqued to the correct specification every 12 months.
- Please check all wiring and electrical connectors are free from damage and replace as necessary.

## DISCLAIMERS

- Do not use this product for any vehicle make or model, other than specified.
- The installation of this product may require the use of specialized tools and/or knowledge.
- It is recommended that this product be installed only by trained professionals
- These instructions are generally correct as of the publication date. ROAM is not responsible for any changes subsequently made by the vehicle manufacturer.
- During installation, the installer should check for the correct operation and clearances of all components.
- Always work safely.

## **SAFETY ITEMS REQUIRED DURING INSTALLATION:**

- Protective eyewear, hearing protection, and mechanics gloves are required.

### **PLEASE NOTE:**

- 'WARNING' notes in the fitting procedure relate to safety advisories.
- To avoid a potentially hazardous situation protective safety gear should be worn at all times and a safe work environment should be maintained.
- If safety procedures are not followed, injury may result.

## **INSTALLATION INSTRUCTIONS**

### **1. BEFORE YOU BEGIN:**

Optional, Remove OEM Rubicon Rock Rails if present

### **2. PLEASE NOTE:**

Please clean or wipe down your frame rails before installation.

### 3. ROAM JL Rock Rails Installation:

#### 3-1. ROAM JL Rock Rails (MK1, JL Unlimited 4 Door JLU, E-Coat)



**PLEASE NOTE:** The ROAM JL Rock Rails are designed to be mounted to the vehicle frame rails on a Jeep Wrangler JL Unlimited (JLU) with the included brackets. Although the ROAM JL Rock Rails can function with just three brackets installed, please install all of the included brackets.

**3-2. Installing the driver's side front bracket:**



**3-2.1.1. Please insert the included flag nut through the opening pictured until the two bolt hole locations are visible through the lower opening.**



**3-2.1.2. With the flag nut aligned and with the bolt hole locations visible, the driver's side front bracket can be bolted onto the frame and then torqued down.**

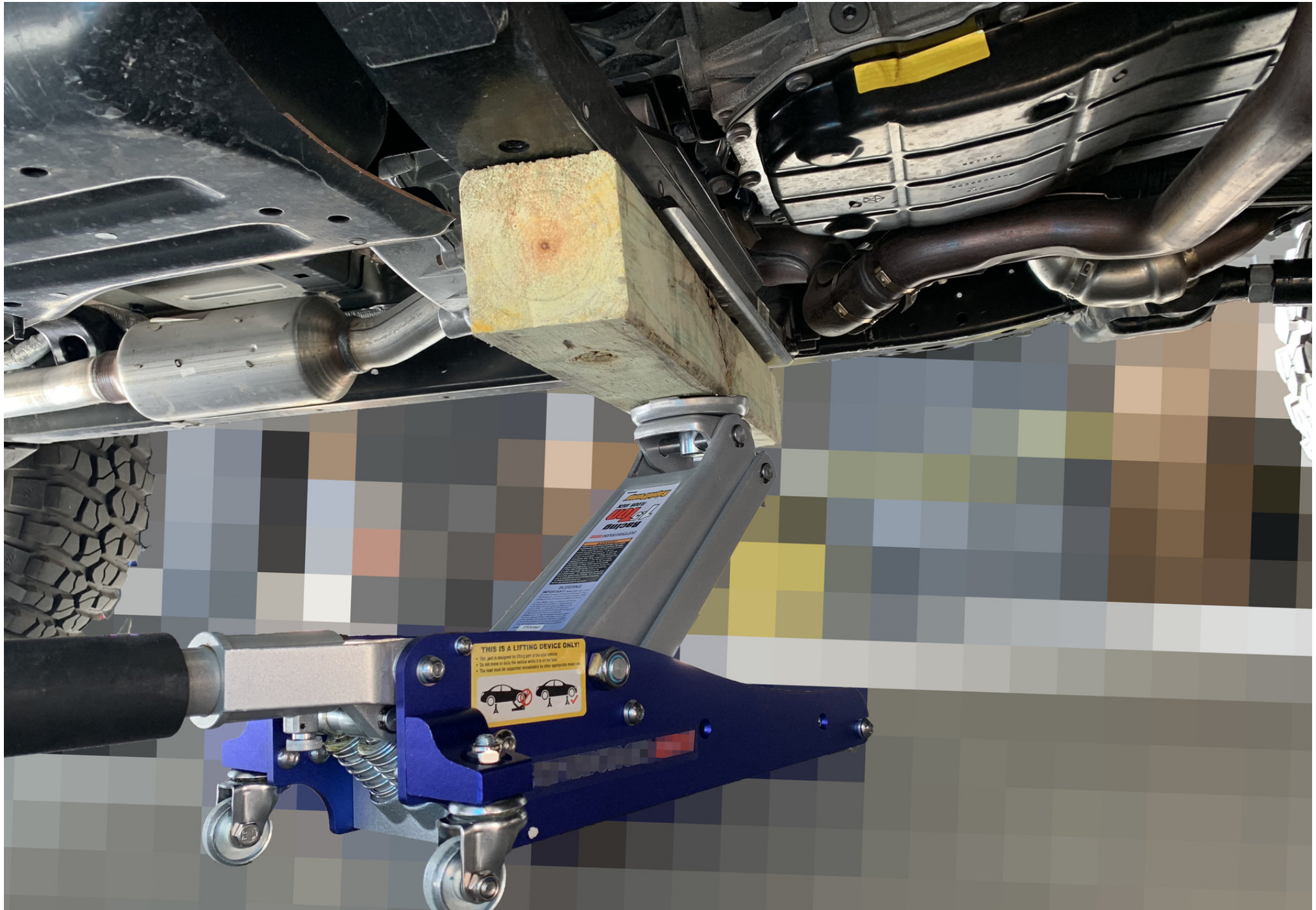


**The driver's side front bracket shown installed.**

3-3. The passenger side front bracket install:



3-3.1. Please support with crossmember with a jackstand before unbolting any of the three bolts pictured.



**3-3.2. Please hang the trapezoidal spacer onto the standoffs before bolting on the bracket with the OE bolts.**



**3-3.3. The driver's side front bracket shown installed.**



3-4. The driver's side mid bracket, the driver's side rear bracket, the passenger side mid bracket, and the passenger side rear bracket install:

**PLEASE NOTE:** For the driver's side mid bracket, the driver's side rear bracket, the passenger side mid bracket, and the passenger side rear bracket install, please do not remove or loosen the main body mount bolt on the frame. On MY2018 and early MY2019 JL's, the main body bolt may have been installed from Jeep with red loctite and attempts to loosen or remove the main body bolts without an induction heater may cause the bolt to break. Installation of the ROAM JL Rock Rails does not require the removal of the main body bolts. The body bolts do not need to be loosened or removed for the install of the ROAM JL Rock Rails.



3-4.1. Loosen and remove the two smaller nuts adjacent to the main body bolts.



**3-4.2. Angle the bracket past the main body bolt washer and then align vs the two studs.**



**3-4.3. With the bracket attached and aligned, please reinstall and then torque the two smaller nuts adjacent to the main body bolt. The body bolts do not need to be loosened or removed for the install of the ROAM JL Rock Rails.**

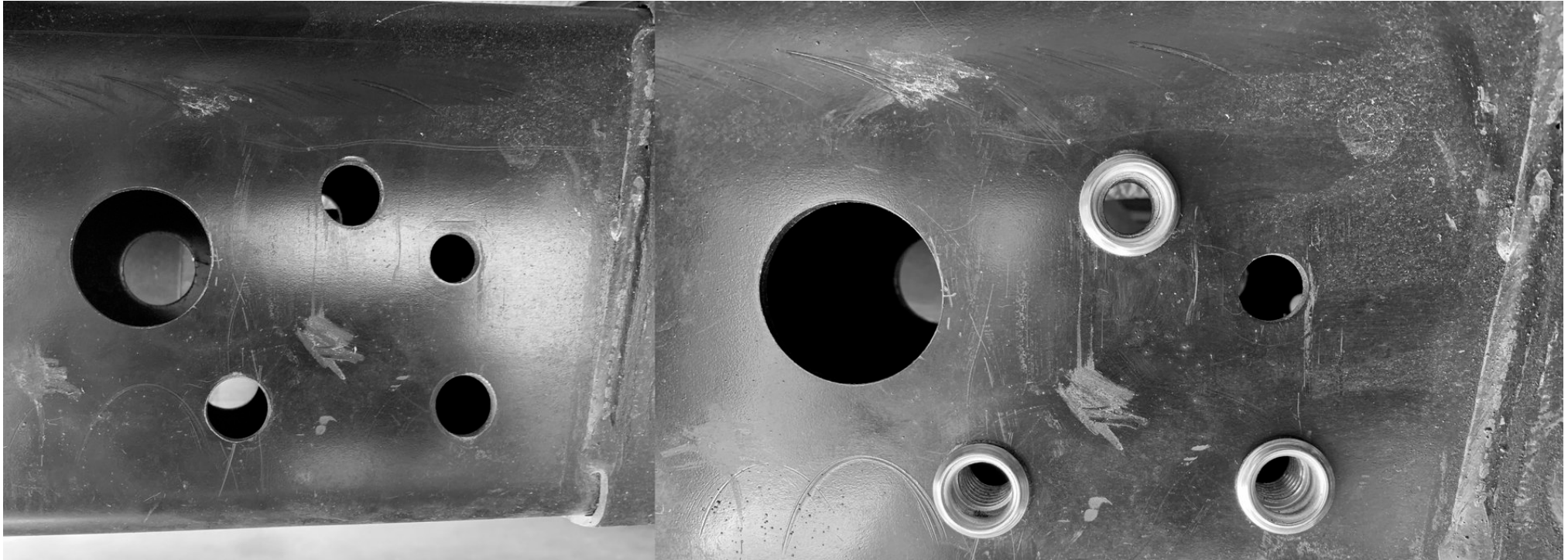


**3-4.4. The passenger side rear bracket shown installed.**

3-5. The driver's side aft bracket and the passenger side aft bracket install (applies only to the 4 door JL Unlimited, MK1 ROAM JL Rock Rails):



**3-5.1. Please insert the included rivnuts into the holes on the frame as pictured.**



3-5.2. With the included bolt and nut, thread the nut onto the bolt and then the bolt into the rivnut.



3-5.3. Two 18mm wrenches are required for this step. To expand the rivnut, tighten the included nut against the rivnut by turning the bolt against the nut.



**PLEASE NOTE:** *This process will need to be repeated for all six rivnuts.*

**3-5.4. Once all six rivnuts have been expanded into the frame, please check that each individual rivnut has been fully expanded. Once the rivnut has been expanded correctly, the rivnut should no longer spin in the frame rail.**

**3-5.5. Please install the aft bracket to the frame and then torque down the bolts.**



**3-5.6. The passenger side aft bracket shown installed.**

### **3-6. Clearances (Clearance Gap between inside of Rock Rails / Side Steps and the JL vehicle body sheetmetal)**

**3-6.1. If you are installing a set of ROAM JL Rock Rails (JL frame mounted), please gap the clearance between the the ROAM JL Rock Rails and the Jeep Wrangler JL vehicle body sheetmetal to a minimum of 1/4" clearance between the ROAM JL Rock Rails and the Jeep Wrangler JL vehicle body sheetmetal.**

**Recommended clearance: 1/4" to 1/2". The clearance gap can be set by sticking a piece of cardboard folded over between the inside edge of the steps and the vehicle body sheetmetal before bolting the transverse bolts down.**

**3-6.2. If you are installing a set of ROAM JL Side Armor Steps (JL body mounted), please gap the clearance between the the ROAM JL Rock Rails and the Jeep Wrangler JL vehicle body sheetmetal to a minimum of 1/16" clearance between the ROAM JL Rock Rails and the Jeep Wrangler JL vehicle body sheetmetal.**

**Recommended clearance: 1/8" to 1/4". The clearance gap can be set by sticking a piece of cardboard between the inside edge of the steps and the vehicle body sheetmetal before bolting the transverse bolts down.**

### **3-7. Optional MK2 configurable bracket install: <TBA>**

#### **4. The ROAM JL Rock Rails shown installed.**

<https://www.jlwranglerforums.com/forums/roam-jl-rock-rails-steps-rock-sliders.16018/page-29#post-616726>

<https://www.jlwranglerforums.com/forums/roam-jl-rock-rails-steps-rock-sliders.16018/page-29#post-616277>

















ROAM TORQUE SPECS

| Description                        | N·m | Ft Lbs | In Lbs | Comment   | Bolt / Nut size |
|------------------------------------|-----|--------|--------|---|-----------------|
| Backing plate nuts                 | 28  | 20     | -      |   | 10mm            |
| Drivers Side Front Bracket bolts   | 70  | 52     | -      | 2 Bolts into Flag Nut                                 | 18mm            |
| Passenger Side Front Bracket Bolts | 70  | 52     | -      | 3 Cross Member Bolts                                  | 18mm            |
| Mid Bracket Frame Nuts             | 48  | 35     | -      | 2 Nuts per Bracket<br>DO NOT REMOVE MAIN BODY BOLT    | 16mm            |
| Mid Bracket Rivnut Bolts           | 48  | 35     | -      | 3 Per Bracket<br>Secure Rivnut Inserts First to Frame | 18mm            |
| Rear Bracket Frame Nuts            | 48  | 35     | -      | 2 Nuts per Bracket<br>DO NOT REMOVE MAIN BODY BOLT    | 16mm            |
| Rail Bolts for Brackets            | 48  | 35     | -      | 2 per Bracket into Rails<br>16 total                  | 16mm            |
|                                    |     |        |        |   |                 |
|                                    |     |        |        |   |                 |

## OE BODY TORQUE SPECS

| Description                              | N·m | Ft Lbs | In Lbs | Comment                 |
|--|-----|--------|--------|-------------------------|
| Body isolator front - body nuts          | 48  | 35     | -      |                         |
| Body isolator front - frame nut          | 66  | 49     | -      | Turn an additional 155° |
| Body isolator A-pillar bolt              | 125 | 92     | -      |                         |
| Body isolator B-pillar bolt - body bolt  | 125 | 92     | -      |                         |
| Body isolator B-pillar bolt - frame nuts | 48  | 35     | -      |                         |
| Body isolator C-pillar bolt - body bolt  | 125 | 92     | -      |                         |
| Body isolator C-pillar bolt - frame nuts | 48  | 35     | -      |                         |
| Body isolator D-pillar bolt - body bolt  | 125 | 92     | -      |                         |
| Body isolator D-pillar bolt - frame nuts | 48  | 35     | -      |                         |

## OE FRAME & BUMPER TORQUE SPECS

| Description   | N·m | Ft. Lbs. | In. Lbs. | Comments |
|---|-----|----------|----------|----------|
| Transmission crossmember to bracket bolts/nuts            | 175 | 129      | -        |          |
| Transmission crossmember to frame bolts (right hand side) | 70  | 52       | -        |          |
| Transmission crossmember to skid plate                    | 75  | 55       | -        |          |