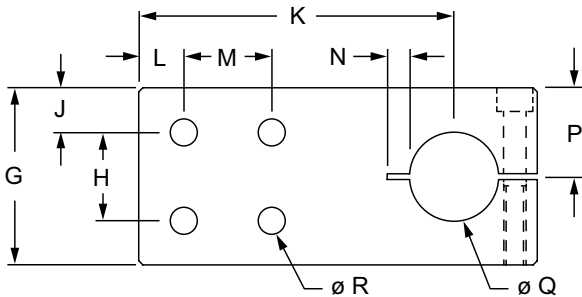
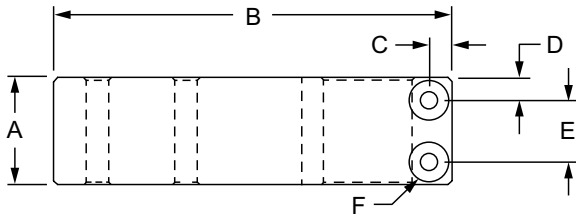


Single Shaft Pre-Drilled Stanchion Mounting Plate

- Used with aluminum tube profile (pg. 9-5) to create custom offset axis; tube connects perpendicular to mounted base

- Clamp screws included



**5415,
5425,
5475**



5525

| Part No. | Series | Color | Material | Alloy | Finish | Process | A | B | C | D | E | F |
|------------|--------|--------|----------|-------------|---------|---------|--------|--------|--------|--------|--------|--------------|
| 5415 | 10 | Clear | Aluminum | 6005A – T61 | Anodize | Milled | 1.200" | 4.500" | .250" | .250" | .700" | 1/4-20 SHCS |
| 5415-Black | 10 | Black | | | | | 1.200" | 4.500" | .250" | .250" | .700" | 1/4-20 SHCS |
| 5425 | 15 | Clear | | | | | 1.200" | 4.500" | .250" | .250" | .700" | 1/4-20 SHCS |
| 5425-Black | 15 | Black | | | | | 1.200" | 4.500" | .250" | .250" | .700" | 1/4-20 SHCS |
| 5475 | 15 | Clear | | | | | 1.450" | 6.500" | .328" | .350" | .750" | 1/4-20 SHCS |
| 5475-Black | 15 | Black | | | | | 1.450" | 6.500" | .328" | .350" | .750" | 1/4-20 SHCS |
| 5525 | 15 | Clear | | | | | 1.950" | 7.750" | .375" | .350" | 1.250" | 5/16-18 SHCS |
| 5525-Black | 15 | Black | | | | | 1.950" | 7.750" | .375" | .350" | 1.250" | 5/16-18 SHCS |
| | | G | H | J | K | L | M | N | P | Q | R | Weight |
| 5415 | 10 | 2.000" | 1.000" | .500" | 3.560" | .500" | 1.000" | .250" | 1.000" | 1.004" | .257" | .946 lb |
| 5415-Black | 10 | 2.000" | 1.000" | .500" | 3.560" | .500" | 1.000" | .250" | 1.000" | 1.004" | .257" | .946 lb |
| 5425 | 15 | 2.000" | 1.500" | .250" | 3.560" | .500" | 1.500" | .250" | 1.000" | 1.004" | .328" | .936 lb |
| 5425-Black | 15 | 2.000" | 1.500" | .250" | 3.560" | .500" | 1.500" | .250" | 1.000" | 1.004" | .328" | .936 lb |
| 5475 | 15 | 3.000" | 1.500" | .750" | 5.125" | .750" | 1.500" | — | 1.500" | 1.505" | .328" | 2.494 lb |
| 5475-Black | 15 | 3.000" | 1.500" | .750" | 5.125" | .750" | 1.500" | — | 1.500" | 1.505" | .328" | 2.494 lb |
| 5525 | 15 | 4.000" | 1.500" | 1.250" | 6.120" | .750" | 1.500" | — | 2.000" | 2.005" | .328" | 5.220 lb |
| 5525-Black | 15 | 4.000" | 1.500" | 1.250" | 6.120" | .750" | 1.500" | — | 2.000" | 2.005" | .328" | 5.220 lb |

Suggested Hardware (Mount Stanchion to T-Slot)

| Part No. | Bolt Assy. | Qty. | Bolt | T-Nut | Washer |
|----------|------------|------|----------------------|---------|--------|
| 5415 | 3432 | 4 | 1/4-20 x 1.5" SHCS | Economy | Yes |
| 5425 | 3423 | 4 | 5/16-18 x 1.75" SHCS | | |
| 5475 | 3424 | 4 | 5/16-18 x 2" SHCS | | |
| 5525 | 3428 | 6 | 5/16-18 x 2.5" SHCS | | |