

JEEP WRANGLER

Compressor

Assy.

MOPAR STANDARD INSTALLATION
MANUAL





QUICK INSTRUCTIONS

Guides, tools and warnings.

READ INSTRUCTIONS

READ INSTRUCTIONS CAREFULLY BEFORE COMMENCING INSTALLATION.

Installation should only be performed by qualified technicians. DO NOT proceed with this installation unless you are qualified to do so. Refer to vehicle workshop manual for additional information on the removal and refit of vehicle components.

TOOLS REQUIRED

- 10mm socket & ratchet
- 13mm socket & ratchet
- Side cutter
- Phillips screwdriver
- 22mm Deep socket
- 10mm combination wrench
- Plastic remover

QUICK GUIDE

- Install compressor at rear swing door assy. behind spare tire bracket.
- Run wire harness from battery passing through floor wire to swing door assy.
- Install control panel and gauge at swing door panel.

ATTENTION!

TAKE CARE DURING THE INSTALLATION.

Take great care not to damage the OEM wiring during the installation process.

COMPONENTS

- Compressor kit assy.

PART NUMBERS

JEEP Wrangler

FITMENT TIME 1hr and 45 minutes

ENSURE THAT THE HARNESSSES ARE NOT DAMAGED WHEN INSTALLING.



DETAILED INTRUCTIONS

Step-by-step instructions with visuals.



STEP 1

Remove negative battery terminal.



STEP 2

Remove rear swing door panel assy.



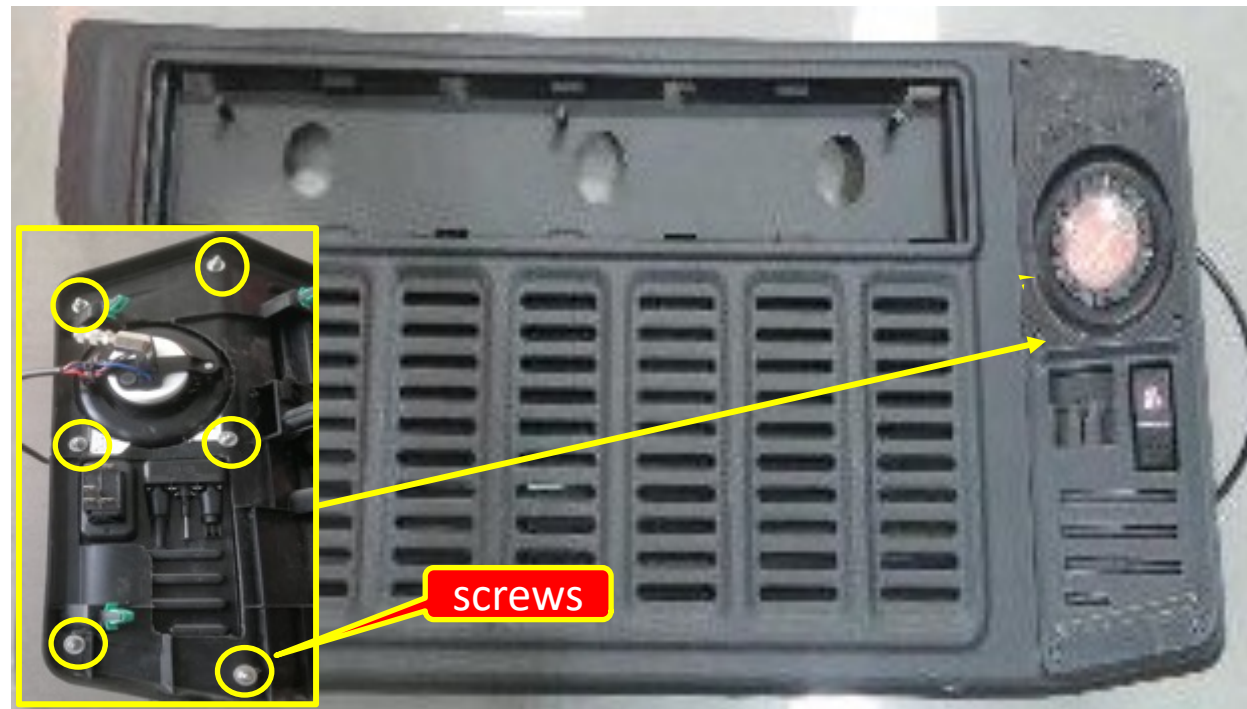
STEP 3

Use a masking tape on the panel for marking using the template for switch & gauge.



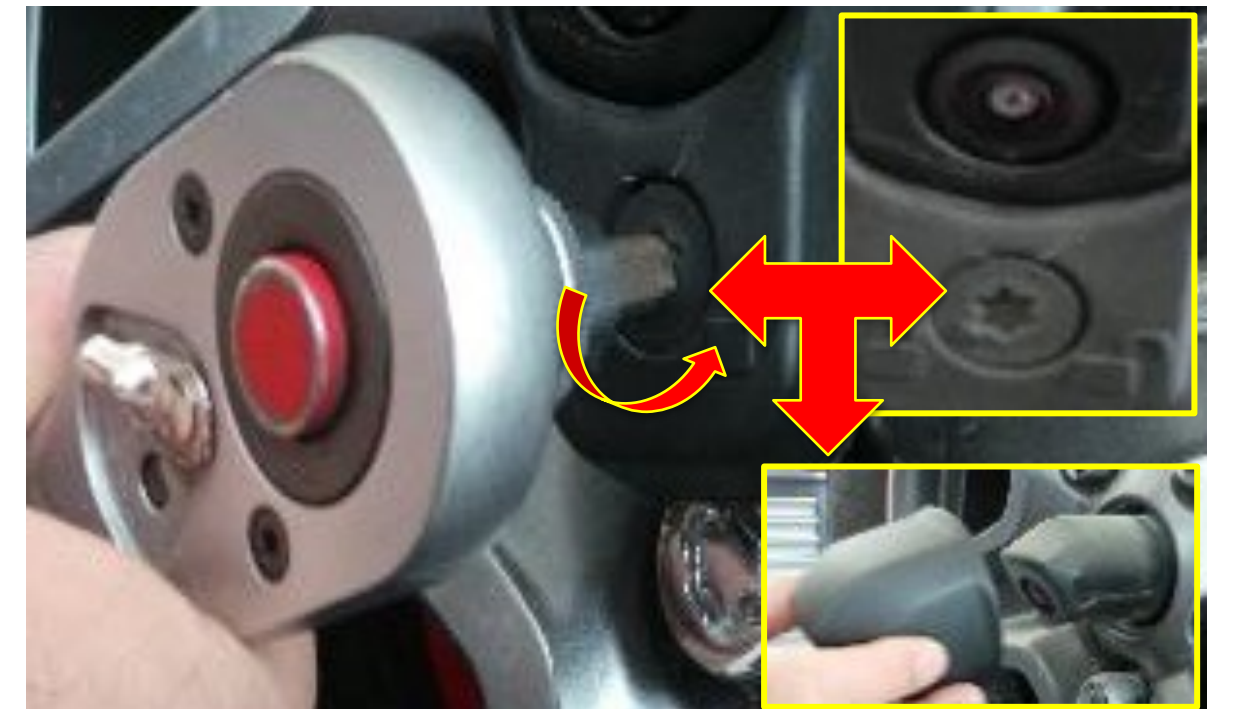
STEP 4

Using an electric cutting saw, cut the marks accordingly.



STEP 5

Install the switch and gauge assy. and secured with six screws supplied. On the back of the swing door panel and secured in the safe place while waiting for the compressor & main power harness to be installed.



STEP 6

Using a torx socket wrench T40, turn right to unlock & remove the rear camera cover.



STEP 7

Using a 22mm deep socket, remove the three spare tire bolt with one special tool.(owner tool)



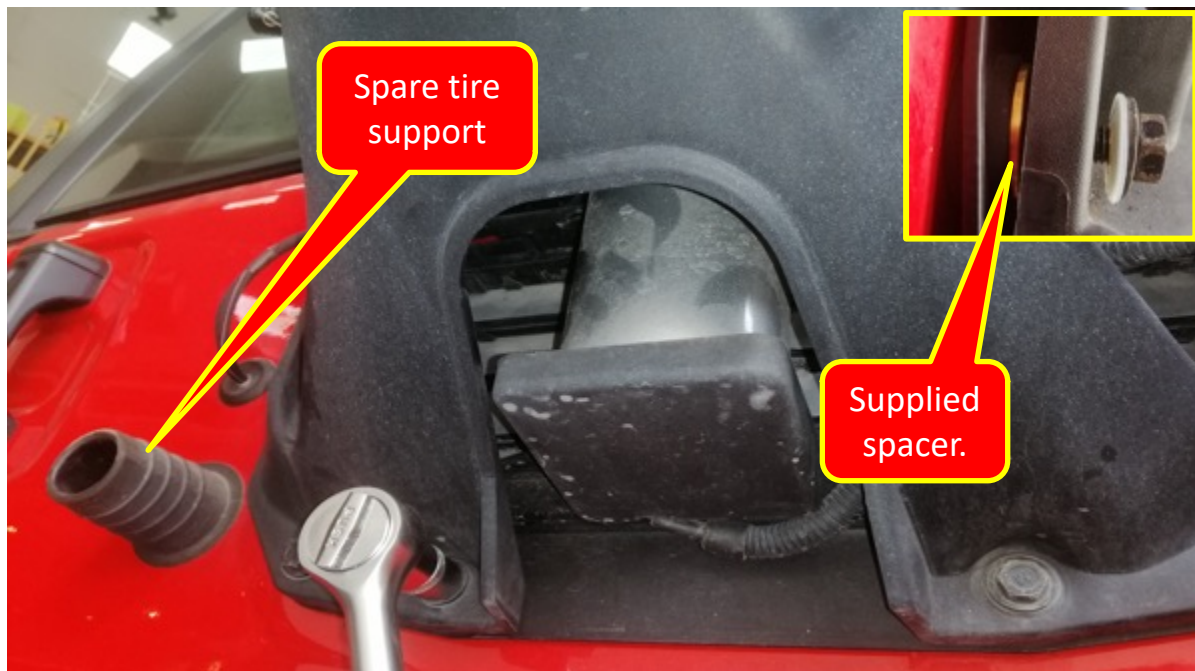
STEP 8

Remove eight OE bolts for spare tire bracket assy.using 13mm socket wrench.



STEP 9

Install the compressor behind the spare tire bracket assy.



STEP 10

Reinstall the spare tire bracket with compressor. Replace spare tire rubber support. **Note: Partially tight the bolt by hand with supplied spacer to prevent from cross threaded.**



STEP 11

Remove grommet and insert the two hoses and compressor wire harness.



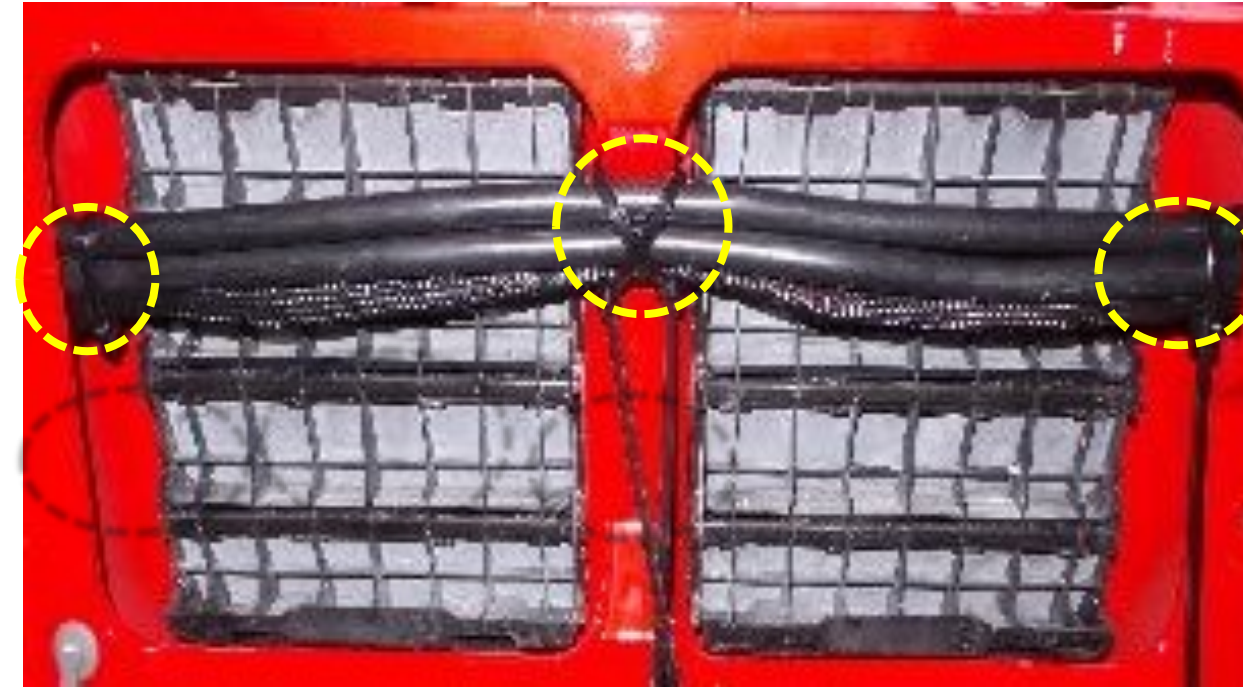
STEP 12

Insert back the rear camera harness and third brake light..



STEP 13

Install the hose at metal guide and tightened the hose nozzle outlet.



STEP 14

Align the hoses & wire harness and secured with four cable ties.(Shown highlighted in circle)



STEP 15

Install the bracket with module with M6 bolt provided the swing gate assy.



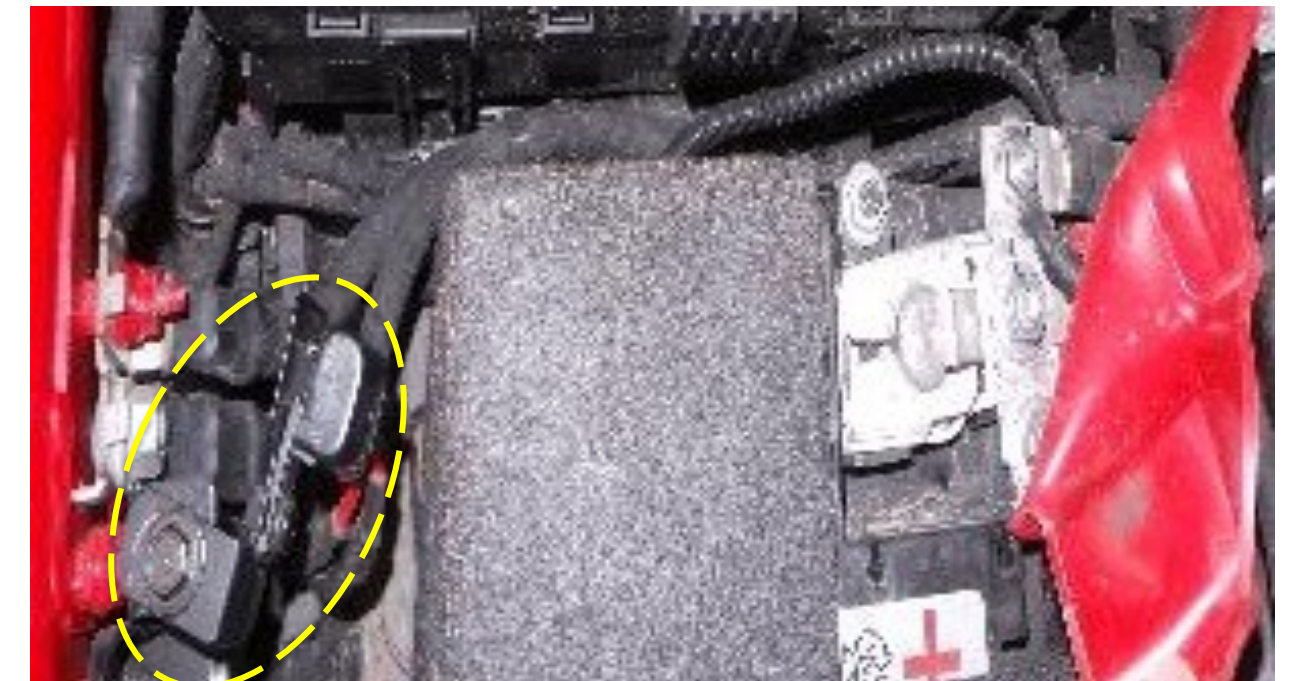
STEP 16

Install filter on the hose coupling.



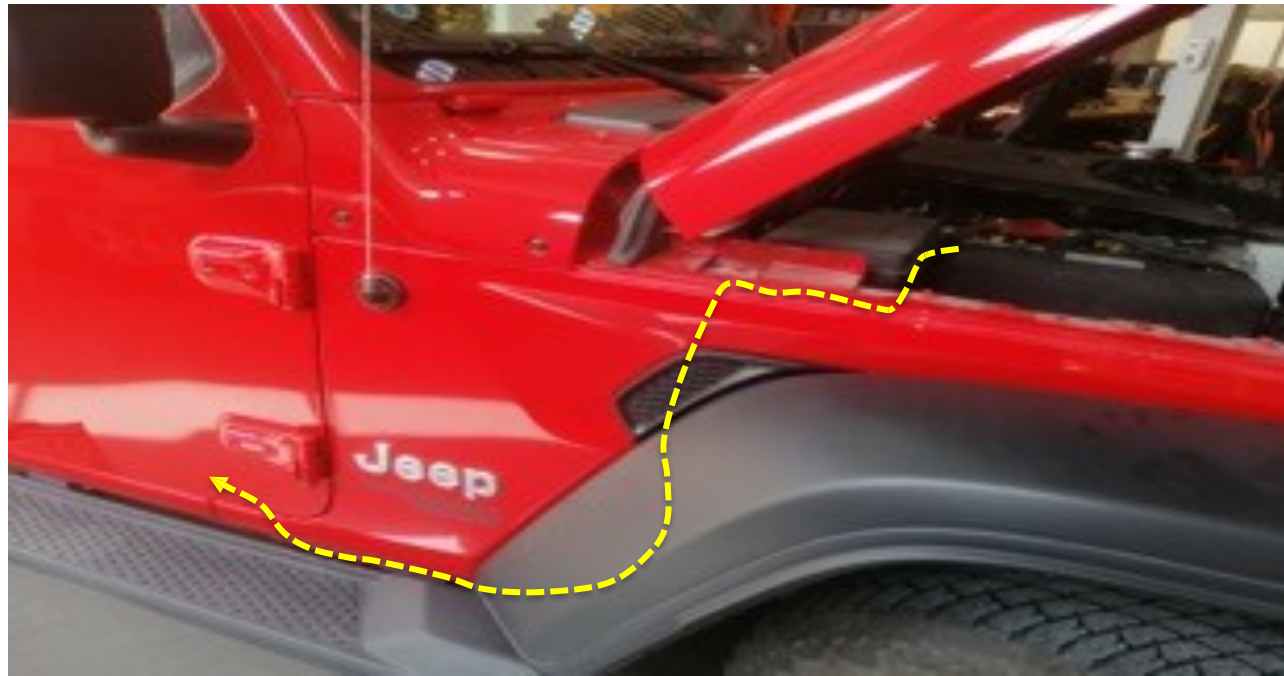
STEP 17

Fix the filter at the at the slotted of the module bracket.



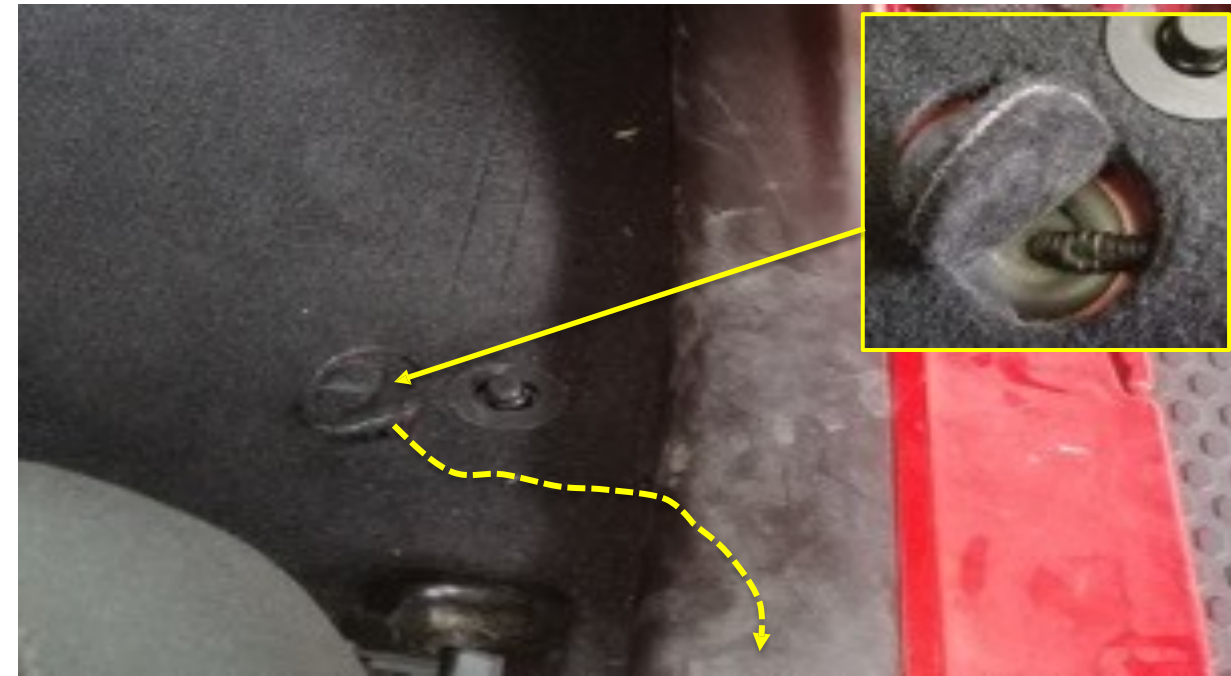
STEP 18

Install the fuse bracket on its location.



STEP 19

Run the wire harness start from battery and route downward under chassis going to floor panel.



STEP 20

Remove rubber mat at RHS and insert the harness passing through floor panel grommet going up to



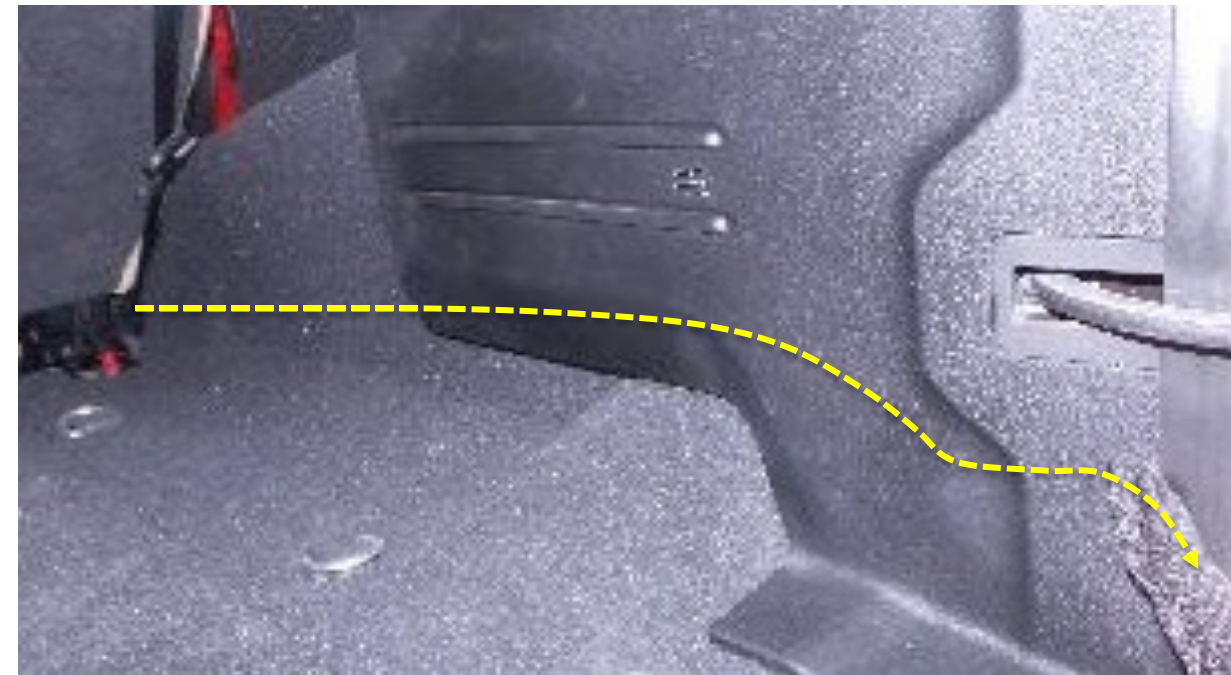
STEP 21

Remove front RHS scuff plate and pass the harness through the OE wire harness.



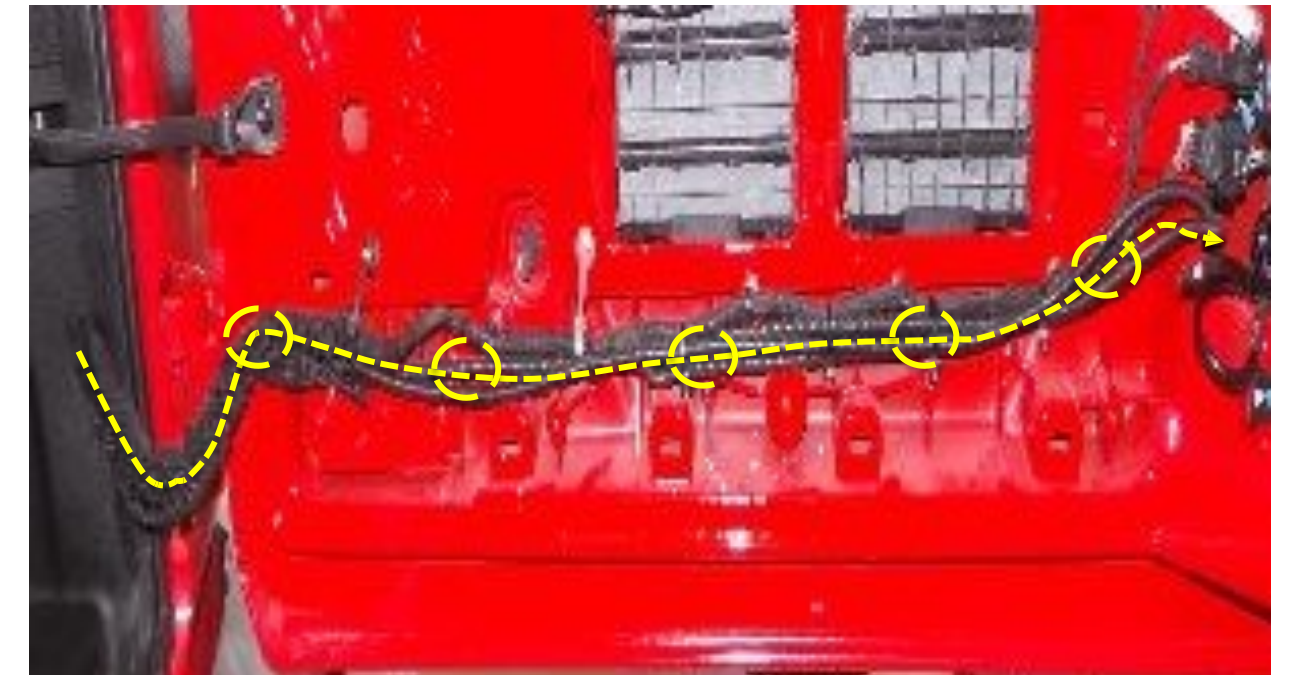
STEP 22

Remove rear RHS scuff plate and pass the harness laiding through the OE wire harness.



STEP 23

Remove rear RHS inner carpet and quarter panel to pass through the wire harness.



STEP 24

Insert the harness at back door insulator and follow the OE harness and secure with cable ties as shown in the highlighted circle.



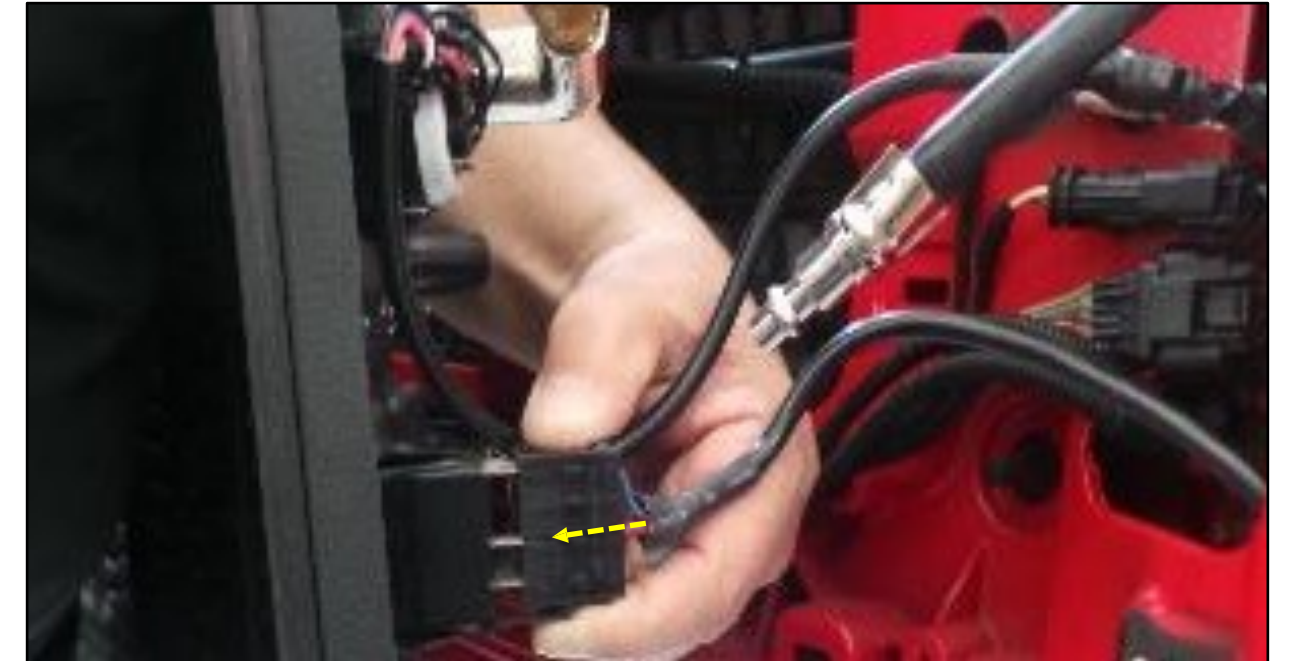
STEP 25

Fix the socket connector of the compressor power harness.



STEP 26

Fix the gauge socket connector harness.



STEP 27

Fix the switch connector harness.



STEP 28

Fix the compressor hose to the quick coupling connector.



STEP 29

Reinstall back swing gate panel assy. with compressor switch & gauge control panel assy.



STEP 30

Fix the fuse 40A to the power supply harness to start product operation.



STEP 31

Flag location..



STEP 32

Reinstall negative terminal.



STEP 33

Complete product installation.



MOPAR®

At your service