

MP CONCEPTS

FORGED FRONT BUMPER ALUMINUM

INSTALLATION INSTRUCTIONS

CONTENTS

- (1) Bumper
- (1) Winch Plate
- (2) Winch Plate Brackets
- (1) Skid Plate
- (2) Skid Plate Brackets
- (2) Fog Light Bezels
- (1) Fairlead Cover
- (2) Fog Light Brackets
- (8) M4X0.7 20mm Allen Bolts
- (8) M4 Washers
- (8) M4 Flange Nuts
- (8) M6x1.0 20mm Allen Bolts
- (12) M6 Washers
- (8) M6 Flange Nuts

TOOLS REQUIRED

- Soft Pry Tool
- 7, 8, 10, 15, 16, 18mm Sockets
- 7, 8, 10, 15, 16, 18mm Wrenches
- Socket Wrench
- 3, 4, 5, 6, 8mm Allen Wrenches

SKU # J134510-JL

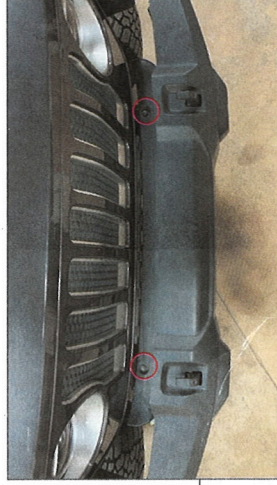
MP CONCEPTS



STEP 1

Begin by removing the outer bumper covers. Using a soft pry tool, remove the (6) plastic push clips.

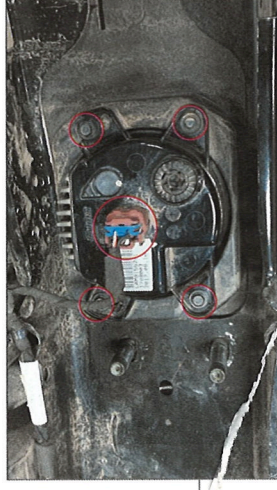
MP CONCEPTS



STEP 3

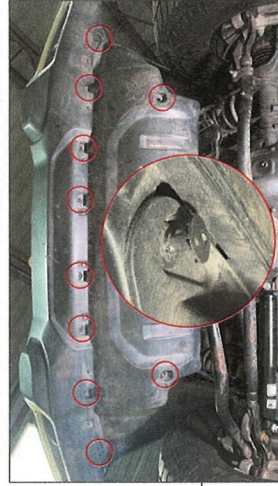
Remove the (2) plastic clips securing the bumper filler panel to the vehicle.

MP CONCEPTS



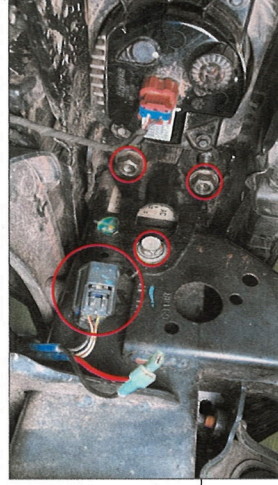
STEP 5

Remove the fog light wiring connection. Use an 8mm socket, remove the (4) factory screw securing the fog light to the bumper cover. Repeat the process for both fog lights.



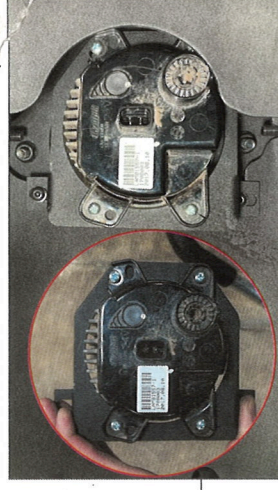
STEP 2

Next, remove the (8) plastic push clips securing the splash shield to the bumper. Remove (2) 8mm screws and remove the splash shield from the vehicle.



STEP 4

Unplug the bumper wiring harness from the passenger side of the bumper. Then remove the (2) 16mm nuts and (1) 16mm nut on each side of both frame rails. There are (12) total fasteners securing



STEP 6

Mount the factory fog light to the new fog light bracket using the (4) M4x 7.20mm bolts, (4) flat washers, and (4) nuts per fog light. Then mount the fog light assembly to the bumper using the

MP CONCEPTS

FORGED FRONT BUMPER ALUMINUM

INSTALLATION INSTRUCTIONS

CONTENTS

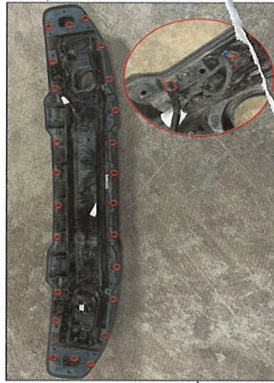
- (1) Bumper
- (1) Winch Plate
- (2) Winch Plate Brackets
- (1) Skid Plate
- (2) Skid Plate Brackets
- (2) Fog Light Bezels
- (1) Fairlead Cover
- (8) M4x0.7 20mm Allen Bolts
- (8) M4 Washers
- (8) M4 Flange Nuts
- (8) M6x1.0 20mm Allen Bolts
- (12) M6 Washers
- (8) M6 Flange Nuts

- (6) M12x1.75 30mm Allen Bolts
- (14) M12x1.75 Flange Nuts
- (6) M12 Washers
- (8) M10x1.50 30mm Allen Bolts
- (8) M10 Washers
- (8) M10x1.50 Flange Nuts
- (5) M8x1.25 Allen Bolts
- (5) M8 Washers

- #### TOOLS REQUIRED
- Soft Pry Tool
 - 7, 8, 10, 15, 16, 18mm Sockets
 - 7, 8, 10, 15, 16, 18mm Wrenches
 - Socket Wrench
 - 3, 4, 5, 6, 8mm Allen Wrenches

SKU # J134510-JL

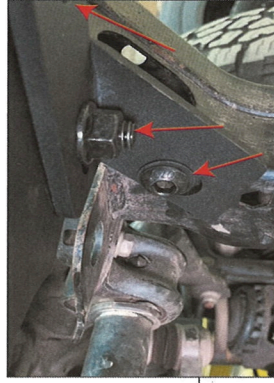
MP CONCEPTS



STEP 7

Remove the factory wiring harness from the bumper by separating the bumper into (2) pieces by removing the screws around the outer edge of the bumper. 1. Clip the wiring harness and transfer it to the new bumper.

MP CONCEPTS



STEP 9

Mount the winch plate to the winch plate brackets using M12 (2) M12x1.75 30mm bolt, (2) washers, (2) flange nuts per bracket. Mount the winch plate to the vehicle using (1) M12x1.75 30mm bolt, (1) flat washer, (1) flange nut per bracket.

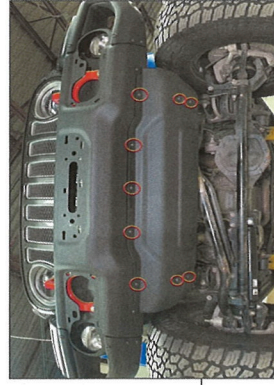
MP CONCEPTS



STEP 11

Place the (2) hexagonal M10x1.5 rivnuts into the inner frame rails.

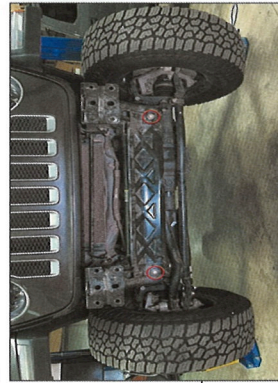
MP CONCEPTS



STEP 13

Install the skid plate to the vehicle. From behind, bolt the skid plate brackets to the inner frame rails using (2) M10x1.50 30mm bolts, (2) M10 washers per bracket. These will bolt into the hexagonal rivnuts from Step 11. Screw the front edge of the skid plate into the bumper using (5) M8x1.25 35mm bolts, and flat washers.

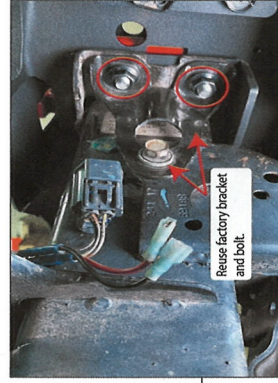
MP CONCEPTS



STEP 8

Remove (2) 16mm bolts securing the factory skid plate to the vehicle. Lift the skid plate up to unhook it from the frame rails and remove it from the vehicle.

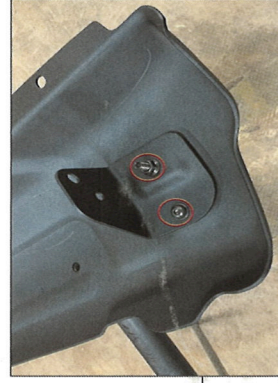
MP CONCEPTS



STEP 10

Bolt the bumper to the vehicle reusing the bumper bracket and bolt. Use (2) M12x1.75 nuts on each side of the frame rail.

MP CONCEPTS



STEP 12

Install the skid plate brackets using (2) M10x1.50 30mm bolts, (2) M10 washers, and (2) M10 Flange nuts per bracket.

MP CONCEPTS



STEP 14

Bolt on the fog light bezels using the (2) M6x1.00 20mm bolts, (2) M6 washers, (2) M6 Flange nuts per bezel. Press on the fairlead cover to complete the installation.