



## CONNECTOR REPAIR KITS

- [Home](#)
- [FAQ](#)
- [Repair Parts](#)
- [Splicing Procedure](#)
- [Feedback](#)

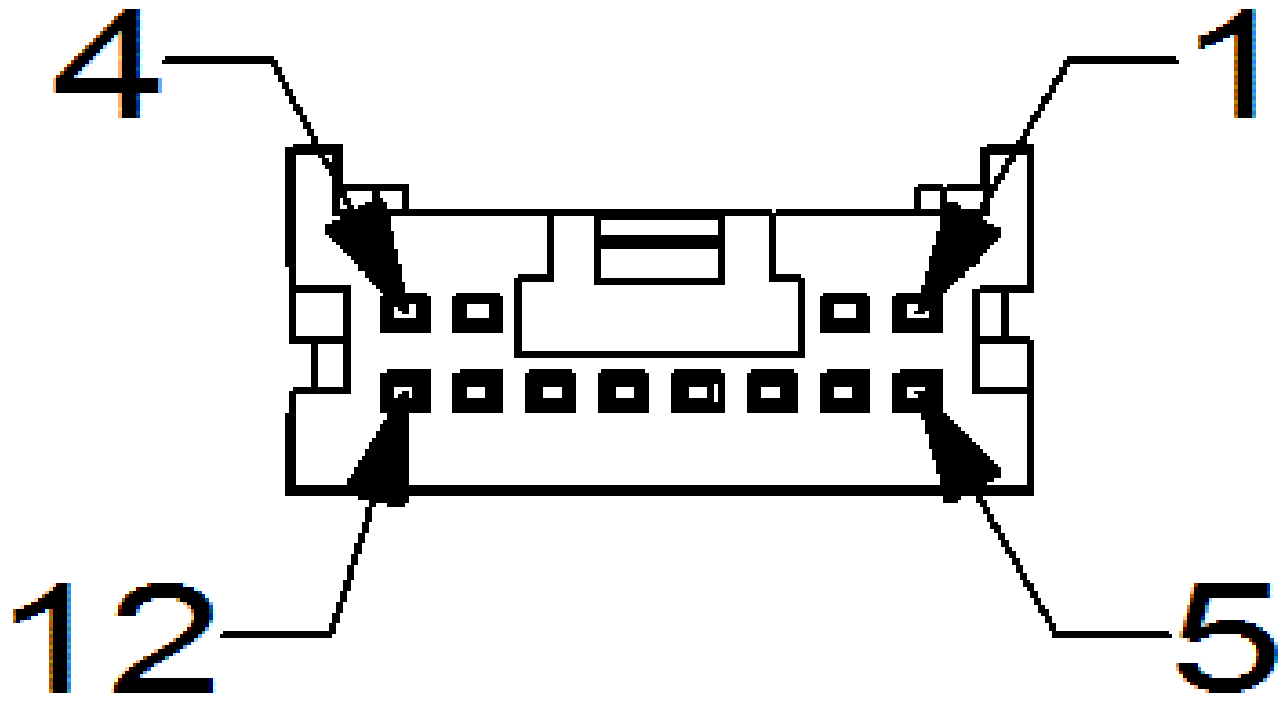
[Back to Results](#) [Print](#)

# MODULE-CENTRAL VISION PROCESSING C1

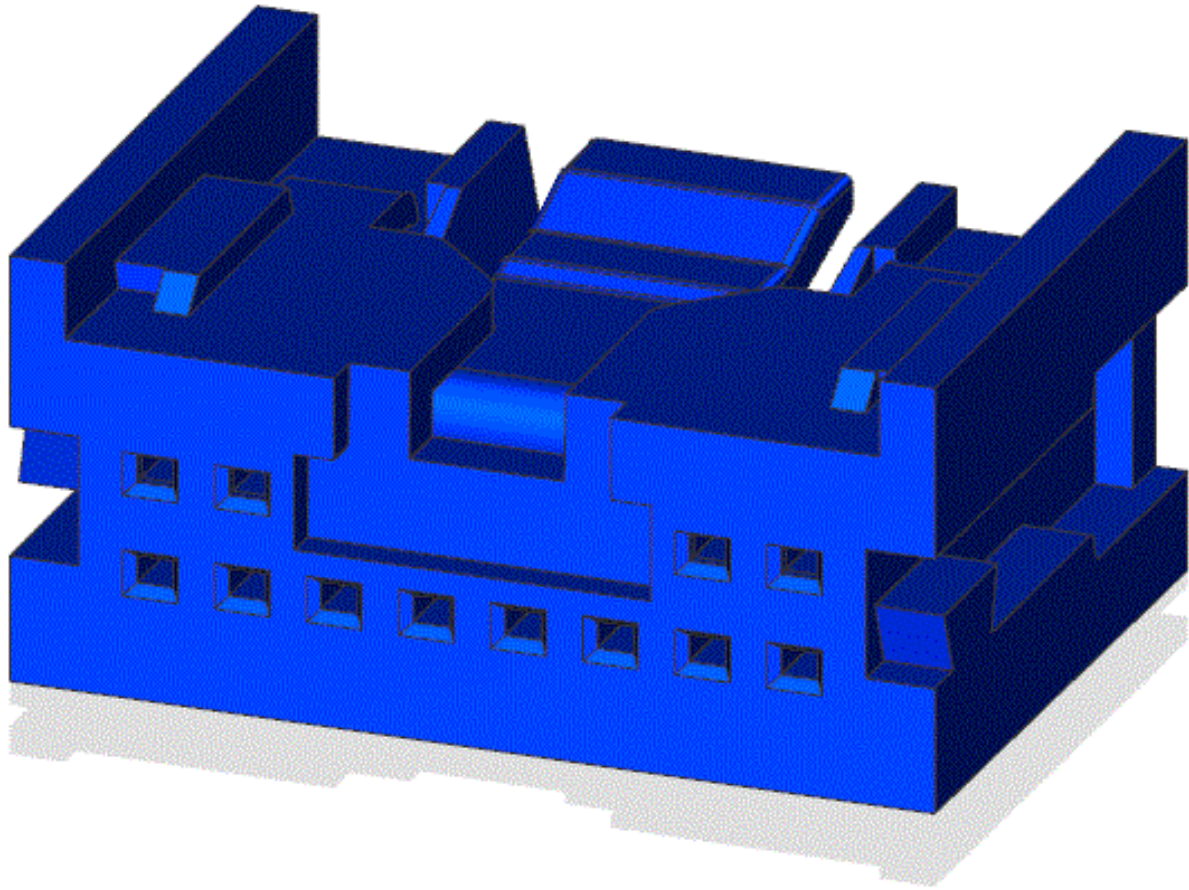
**Full Repair Kit: TBD 19HD-4**

No terminal repair kits have been identified.

**End View**



**Isometric View**



## Removal Tools

A specific removal tool has not been identified.

## Pin Information

	<b>Cav</b>	<b>Circuit</b>	<b>Gauge</b>	<b>Color</b>	<b>Function</b>
1	N0	0	NA	NO CONNECT	
2	N0	0	NA	NO CONNECT	
3	N0	0	NA	NO CONNECT	
4	F928	0.35	PK/YE	IGNITION RUN OUTPUT	

<b>Cav</b>	<b>Circuit</b>	<b>Gauge</b>	<b>Color</b>	<b>Function</b>
5	N0	0	NA	NO CONNECT
6	N0	0	NA	NO CONNECT
7	N0	0	NA	NO CONNECT
8	D263	0.35	DB	CAN IHS (+)
9	D262	0.35	WH/OG	CAN IHS (-)
10	N0	0	NA	NO CONNECT
11	N0	0	NA	NO CONNECT
12	Z916	0.35	BK/YE	GROUND



Mopar is a registered trademark of Chrysler Group LLC. © Copyright 2011 Chrysler Group LLC. All Rights Reserved. Chrysler, Jeep, Dodge, Ram, Mopar and the Pentastar logo are registered trademarks of Chrysler Group LLC. FIAT is a registered trademark of Fiat Group Marketing & Corporate Communication SpA, used under license by Chrysler Group, LLC. GEM and design is a registered trademark of Chrysler Group Global Electric Motorcars LLC, a wholly owned subsidiary of Chrysler Group LLC. ©2011 Chrysler Group LLC, All Rights Reserved. v1.5.2 Built:11/04/2019