



### In this package:

- 1 – JLU4FB Alien Sunshade
- 1 – Windshield attachment pack
  - 4 X 6" t-bar bungees
  - Slim installation tool
- 12 – Long bungees
- 1 – Alien buddy

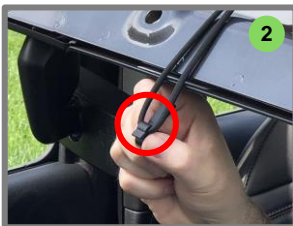


Windshield dropped for illustrative purposes only  
 YOU DO NOT NEED TO DROP YOUR WINDSHIELD  
 TO INSTALL YOUR ALIEN SUNSHADE

### Installing Front Attachment Points

Our innovative front attachment system includes our proprietary JL clips which allow you to attach the front of your shade WITHOUT lowering your windshield.

- **Front Center Attachment Points** – The two center attachment points should be positioned to the outside of each of the center windshield bolts. **1** To attach these bungees, take one of the 6" T-bar bungees and thread it between the windshield and the windshield frame using the slim installation tool included in the package. **2** Connect the bungee to the short hook on the clip, **3** then secure the clip to the metal windshield frame by carefully sliding it into place. Repeat this process for the other center attachment points.
- **Front Corner Attachment Points** – The two corner attachment points should be positioned to the outside of each of the front corner windshield bolts. Using the same process as the center attachment points, install each of the front corner attachment points.



### Attach Your Shade Using the T-bar Bungees

With the t-bar bungees in the straight position, push the t-bar through the grommet and open/turn sideways to secure the shade.

### Attach Your Shade to the Sides of the Roll Cage

Using 10 of the bungee balls, secure the sides of the shade with the balls facing down, toward the inside of your Jeep.

### Secure the Rear Corners of Your Shade

Using the last two bungees, secure the rear two grommets around the rear/side of the roll bar above the seat belt bracket. Note - You may rotate these bungee balls to hide the balls under the roll cage.

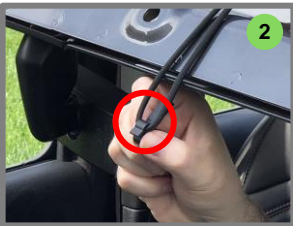
### Adjust Your Shade and Bungees to Ensure a Smooth/Tight Fit

#### Notes

- To reinstall your freedom panels, simply reach between your shade and the roll bar to latch the panels.
- Please email [customersupport@aliensunshade.com](mailto:customersupport@aliensunshade.com) if you have any installation questions.



Windshield dropped for illustrative purposes only  
**YOU DO NOT NEED TO DROP YOUR WINDSHIELD  
 TO INSTALL YOUR ALIEN SUNSHADE**



### In this package:

- 1 – JLF Alien Sunshade
- 1 – Windshield attachment pack
  - 4 X 6" t-bar bungees
  - Slim installation tool
- 2 – Long bungees
- 2 – Extra long bungees
- 2 – Super extra long bungees
- 1 – Alien buddy

### Installing Front Attachment Points

Our innovative front attachment system includes our proprietary JL clips which allow you to attach the front of your shade **WITHOUT** lowering your windshield.

- **Front Center Attachment Points** – The two center attachment points should be positioned to the outside of each of the center windshield bolts. **1** To attach these bungees, take one of the 6" T-bar bungees and thread it between the windshield and the windshield frame using the slim installation tool included in the package. **2** Connect the bungee to the short hook on the clip, **3** then secure the clip to the metal windshield frame by carefully sliding it into place. Repeat this process for the other center attachment points.
- **Front Corner Attachment Points** – The two corner attachment points should be positioned to the outside of each of the front corner windshield bolts. Using the same process as the center attachment points, install each of the front corner attachment points.

### Attach Your Shade Using the T-bar Bungees

With the t-bar bungee in the straight position, push it through the grommet from the top and open/turn sideways to secure the shade.

### Attach Your Shade to the Sides of the Roll Cage

Using the two long bungees,, secure the sides of the shade with the balls facing down, toward the inside of your Jeep.

### Attach the rear corners of your shade

While sitting in the back seat, use the two extra long bungees to secure the rear corners. Stretch the bungees around the side of the roll bar.

### Attach the Rear Center Bungees

While still in the back seat, use the two super extra long bungees balls to secure the rear/middle section of the shade. Carefully stretch the bungees around the sound bar and secure to the bungee ball.

### Adjust Your Shade and Bungees to Ensure a Smooth/Tight Fit

#### Notes

- Please email [customersupport@aliensunshade.com](mailto:customersupport@aliensunshade.com) if you have any installation questions.

## Beauty Shot

## Show four attachment points

Show  
bungee with  
slim tool

Show  
bungee  
pulled  
through with  
slim tool

Show  
Bungee  
attached to  
clip

Show clip  
attached to  
body panel

Show 8"  
bungee ball  
attached to  
roll bar

Show Rear  
Bungees

Show center  
holes

In this package

- 1 Alien Sunshade for your JL
- 1 Front attachment pack - includes 4-6" t-Bar bungees and the slim installation tool.
- 1 - bungee attachment pack – 2- long bungees, 2 extra-long bungees and 2 super extra-long bungees
- 1 – Jeep alien buddy

1 - Installing the front attachment points

Our innovative front attachment system includes our proprietary JL clips which allow you to attach the front of your shade WITHOUT lowering your windshield.

- **Front Center Attachment Points** – The two center attachment points should be positioned to the outside of each of the center windshield bolts. To attach these bungees, take one of the 6" T-bar bungees and thread it between the windshield and the windshield frame using the included slim installation tool included in the package. Connect the bungee to the short hook on the clip, then secure the clip to the metal windshield frame by carefully sliding it into place. Repeat this process for the other center attachment points.
- **Front Corner Attachment Points** – The two corner attachment points should be positioned to the outside of each of the front corner windshield bolts. Using the same process as the center attachment points, install each of the front corner attachment points.

2 – Using the attachment points, install your shade.

With the t-bar bungees in the straight position, the t-bar through the grommet and open/turn sideways to secure the shade to the t-bar bungee.

3 – Attach your shade to the sides of the roll cage  
Using the two long bungee balls, secure the sides of the shade with the balls facing down, toward the inside of your Jeep.

4 – Attach the rear corners of your shade  
While sitting in the back seat, use the two extra long bungees to secure the rear corners. Stretch the bungees around the side of the roll bar.

5 – Attach the rear center bungees  
While still in the back seat, use the two super extra long bungees balls to secure the rear/middle section of the shade. Carefully stretch the bungees around the sound bar and secure to the bungee ball.

5 – Adjust your shade and bungees to ensure a smooth/tight fit.

### Notes

- Please email [customersupport@aliensunshade.com](mailto:customersupport@aliensunshade.com) if you have any installation questions.

- JLF