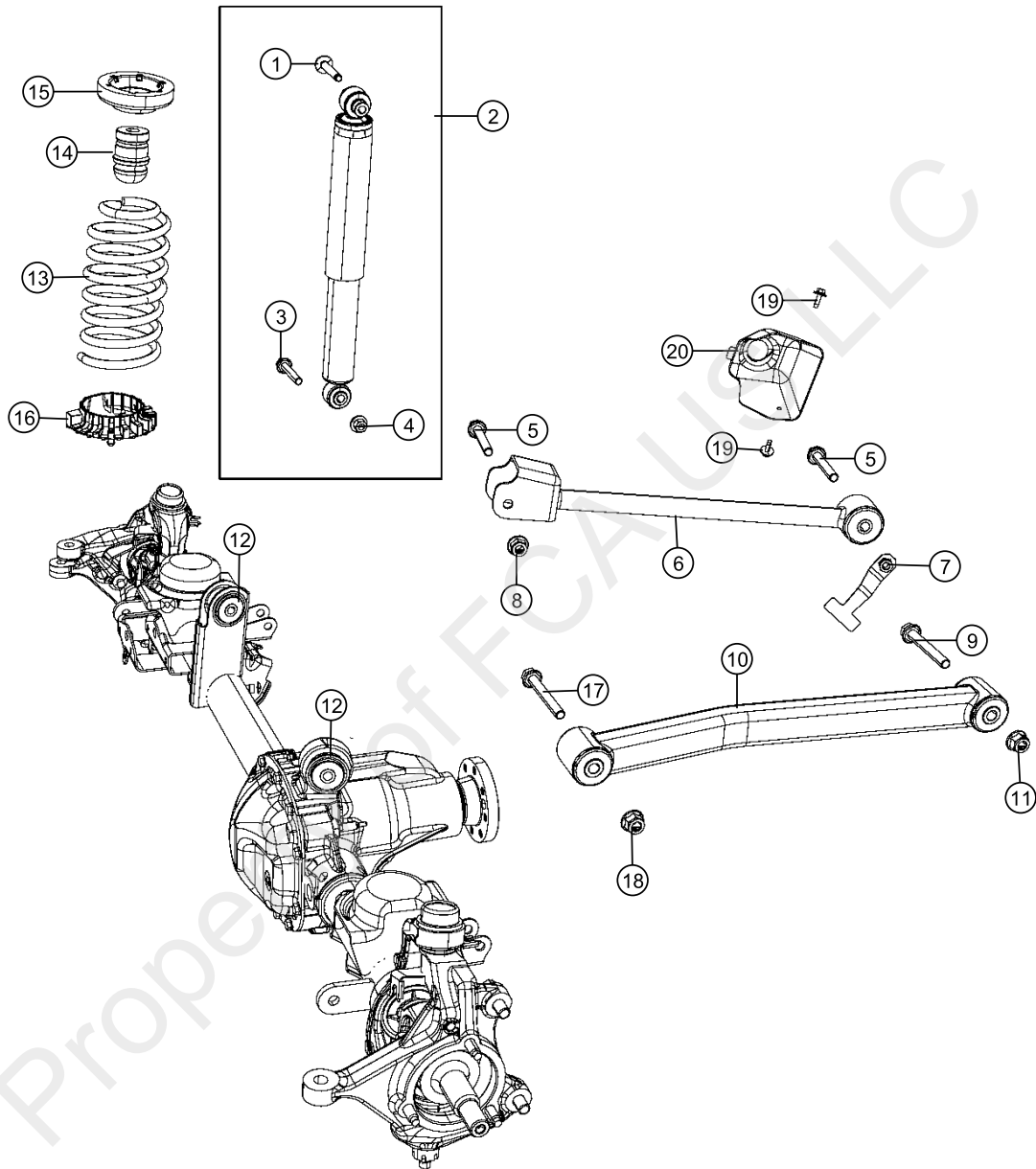


002 - Front Suspension 110 - Suspension, Front, Springs, Shocks, Control Arms

Dealer Comments:



002 - Front Suspension 110 - Suspension, Front, Springs,Shocks,Control Arms

Pos	Description	Part Number	Qty	Eng	Trans	Line
1	BOLT AND WASHER, Hex Flange Head, M12X1.50X120.00	06512467AA	2			J U
2	SHOCK ABSORBER KIT, Suspension, Front					
2	SHOCK ABSORBER KIT, Suspension, Front, [SDD] OR [SDU]	68382607AB	2			J U
2	SHOCK ABSORBER KIT, Suspension, Front, [SDA]	68382828AB	2			J
2	SHOCK ABSORBER KIT, Suspension, Front, [SDU]	68382829AA	2			J U
2	SHOCK ABSORBER KIT, Suspension, Front, [SDU]	68382831AA	2	EXJ		J U
2	SHOCK ABSORBER KIT, Suspension, Front, [SDB]	68382846AB	2			J U
2	SHOCK ABSORBER KIT, Suspension, Front, [SDA]	68383632AB	2	EC1 EC3 ERC		J
2	SHOCK ABSORBER KIT, Suspension, Front, [SDD] OR [SDU]	68383633AA	2	EBH EC1 EC3 ERC		J U
2	SHOCK ABSORBER KIT, Suspension, Front, [SDU]	68383633AA	2	EBH EC1 EC3 ERC		J U
2	SHOCK ABSORBER KIT, Suspension, Front, [SDU], [M1A]	68383633AA	2	EBH EC1 EC3 ERC		J U
3	BOLT, Hex Flange Head, M12X1.50X70.00	06104242AA	1			J U
4	NUT AND WASHER, Hex, M12x1.50	06510676AA	2			J U
5	BOLT, Hex Flange Head, M12X1.50X88.50	06512084AA	2			J U
6	ARM, Upper Control, Front					
6	ARM, Upper Control, Front, Right	68277340AC	1			J U
6	ARM, Upper Control, Front, Left	68277341AC	1			J U
7	NUT AND RETAINER, Hex Flange Lock, M12x1.50	06511834AA	2			J U
8	NUT, Hex Flange Lock, M12X1.50	06104718AA	2			J U
9	BOLT, Hex Flange Head, M16X1.50X104.00	06512085AA	2			J U
10	ARM, Lower Control, Front					
10	ARM, Lower Control, Front, Right	68250242AB	1			J U
10	ARM, Lower Control, Front, Left	68250242AB	1			J U
11	NUT, Hex Flange Lock, M16x1.50	06104720AA	2			J U
12	BUSHING, Control Arm					

Pos	Description	Part Number	Qty	Eng	Trans	Line
12	BUSHING, Control Arm, [X84], [DJE], [DME], [DS7], [DHP]	68332999AB	2			J
12	BUSHING, Control Arm, [X84], [DJE], [DME], [DS7], [DHN]	68332999AB	2			J
12	BUSHING, Control Arm, [X84], [DJE], [DMF], [DSE], [DHF]	68332999AB	2			J
12	BUSHING, Control Arm, [X84], [DJF], [DME], [DSE], [DHW]	68332999AB	2			J
12	BUSHING, Control Arm, [X84], [DJF], [DMF], [DSE], [DHW]	68332999AB	2			J
12	BUSHING, Control Arm, [X84], [DJE], [DME], [DSE], [DHF]	68332999AB	2			U
12	BUSHING, Control Arm, [X84], [DJD], [DLK], [DS7], [DHP]	68332999AB	2			U
12	BUSHING, Control Arm, [X84], [DJD], [DLK], [DS7], [DHP]	68332999AB	2			J
12	BUSHING, Control Arm, [X84], [DJD], [DLK], [DS7], [DHN]	68332999AB	2			J
12	BUSHING, Control Arm, [X84], [DJE], [DME], [DS7], [DHP]	68332999AB	2			U
12	BUSHING, Control Arm, [X84], [DJE], [DMF], [DSE], [DHF]	68332999AB	2			U
12	BUSHING, Control Arm, [X84], [DJE], [DME], [DSE], [DHF]	68332999AB	2			J
13	SPRING, Front Coil					
13	SPRING, Front Coil, Right, [ZNA]	68250228AB	1	EBH EC1 EC3 ERC		J U
13	SPRING, Front Coil, Left, [ZAA]	68250228AB	1	EBH EC1 EC3 ERC		J U
13	SPRING, Front Coil, Right, [ZNB]	68250229AB	1	EBH EC1 EC3 ERC		J U
13	SPRING, Front Coil, Left, [ZAB]	68250229AB	1	EBH EC1 EC3 ERC		J U
13	SPRING, Front Coil, Right, [ZNC]	68250230AB	1	EBH EC1 EC3 ERC		J U
13	SPRING, Front Coil, Left, [ZAC]	68250230AB	1	EBH EC1 EC3 ERC		J U
13	SPRING, Front Coil, Right, [ZND]	68250231AB	1	EBH EC1 EC3 ERC		J U
13	SPRING, Front Coil, Left, [ZAD]	68250231AB	1	EBH EC1 EC3 ERC		J U
13	SPRING, Front Coil, Right, [ZNE]	68250232AB	1	EBH EC1 EC3 ERC		J U
13	SPRING, Front Coil, Left, [ZAE]	68250232AB	1	EBH EC1 EC3 ERC		J U
13	SPRING, Front Coil, Right, [ZNF]	68250233AB	1	EBH EC1 EC3 ERC		J U
13	SPRING, Front Coil, Left, [ZAF]	68250233AB	1	EBH EC1 EC3 ERC		J U
13	SPRING, Front Coil, Right, [ZNG]	68250234AB	1	EBH EC1 EC3 ERC		J U
13	SPRING, Front Coil, Left, [ZAG]	68250234AB	1	EBH EC1 EC3 ERC		J U

Pos	Description	Part Number	Qty	Eng	Trans	Line
13	SPRING, Front Coil, Right, [ZNH]	68250235AB	1	EBH EC1 EC3 ERC		J U
13	SPRING, Front Coil, Left, [ZBC]	68250235AB	1	EBH EC1 EC3 ERC		J U
13	SPRING, Front Coil, Right, [ZNJ]	68250236AB	1	EBH EC1 EC3 ERC		J U
13	SPRING, Front Coil, Left, [ZAJ]	68250236AB	1	EBH EC1 EC3 ERC		J U
13	SPRING, Front Coil, Right, [ZPC]	68250240AB	1	EBH EC1 EC3 ERC		J U
13	SPRING, Front Coil, Left, [ZBC]	68250240AB	1	EBH EC1 EC3 ERC		J U
13	SPRING, Front Coil, Right, [ZPD]	68253657AB	1	EBH EC1 EC3 ERC		J U
13	SPRING, Front Coil, Left, [ZBD]	68253657AB	1	EBH EC1 EC3 ERC		J U
13	SPRING, Front Coil, Right, [ZPE]	68253658AB	1	EBH EC1 EC3 ERC		J U
13	SPRING, Front Coil, Left, [ZBE]	68253658AB	1	EBH EC1 EC3 ERC		J U
13	SPRING, Front Coil, Right, [ZPF]	68253659AB	1	EBH EC1 EC3 ERC		J U
13	SPRING, Front Coil, Left, [ZBF]	68253659AB	1	EBH EC1 EC3 ERC		J U
13	SPRING, Front Coil, Right, [ZPG]	68253660AB	1	EBH EC1 EC3 ERC		J U
13	SPRING, Front Coil, Left, [ZBG]	68253660AB	1	EBH EC1 EC3 ERC		J U
13	SPRING, Front Coil, Right, [ZPH]	68253661AB	1	EBH EC1 EC3 ERC		J U
13	SPRING, Front Coil, Left, [ZBH]	68253661AB	1	EBH EC1 EC3 ERC		J U
13	SPRING, Front Coil, Right, [ZPJ]	68253662AB	1	EBH EC1 EC3 ERC		J U
13	SPRING, Front Coil, Left, [ZBJ]	68253662AB	1	EBH EC1 EC3 ERC		J U
13	SPRING, Front Coil, Right, [ZPK]	68253663AB	1	EBH EC1 EC3 ERC		J U
13	SPRING, Front Coil, Left, [ZBK]	68253663AB	1	EBH EC1 EC3 ERC		J U
13	SPRING, Front Coil, Right, [ZPL]	68253664AB	1	EBH EC1 EC3 ERC		J U
13	SPRING, Front Coil, Left, [ZBL]	68253664AB	1	EBH EC1 EC3 ERC		J U
14	BUMPER, Jounce	68251638AA	2	EBH EC1 EC3 ERC		J U
15	ISOLATOR, Spring, Upper	68253406AB	2			J U
16	ISOLATOR, Spring, Lower					
16	ISOLATOR, Spring, Lower, Left	68342245AB	1			J U
16	ISOLATOR, Spring, Lower, Right	68342250AB	1			J U
17	BOLT, Hex Flange Head, M16X1.50X104.00	06512085AA	2			J U

Pos	Description	Part Number	Qty	Eng	Trans	Line
18	NUT, Hex Flange Lock, M16x1.50	06104720AA	2			J U
19	SCREW AND WASHER, Hex Head, M6X1.00X21.80	06509319AA	4			J U
20	SHIELD, Heat					
20	SHIELD, Heat, Right, Upper Control Arm Heat Shield	68251030AA	1			J U
20	SHIELD, Heat, Left, Upper Control Arm Heat Shield	68251031AA	1			J U

Property of FCA US LLC