

## SENSOR-IN CAR TEMPERATURE

**Harness Family:** IP

**Color:** BLACK

**Gender:** FEMALE

**Part Number:** 13654871

**Part Description:**

**Connector No:** D2676A

**Option:** Standard

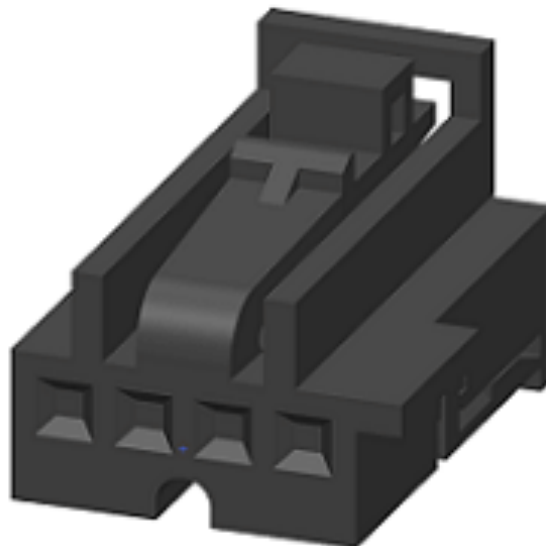
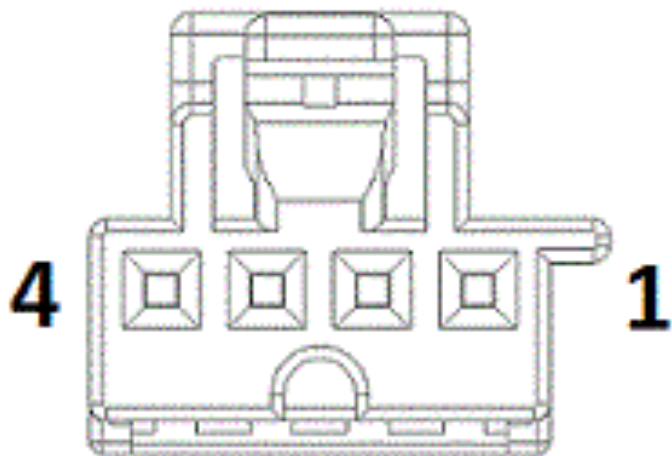
**Repair Kit Part Number:**

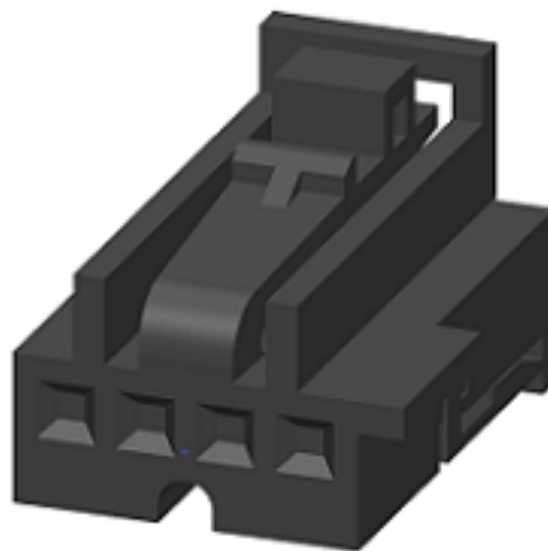
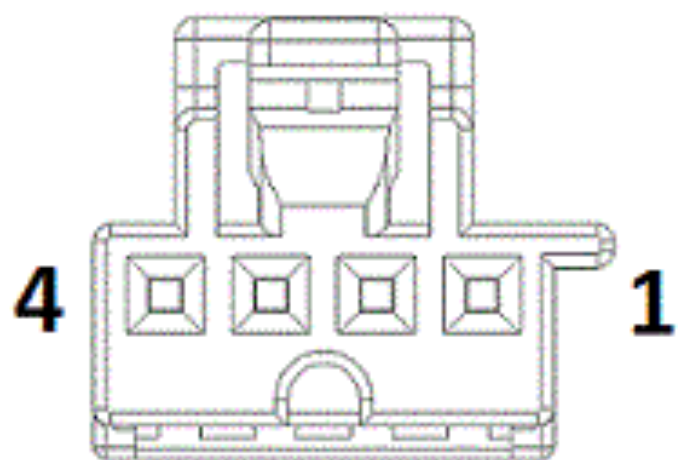
**Cavity Count:** 4

**Available Views:** [Location View](#)

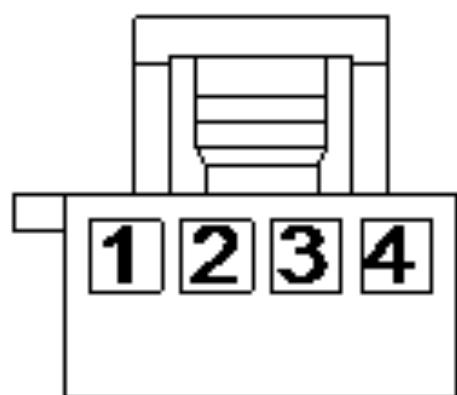
**Mating Side:**

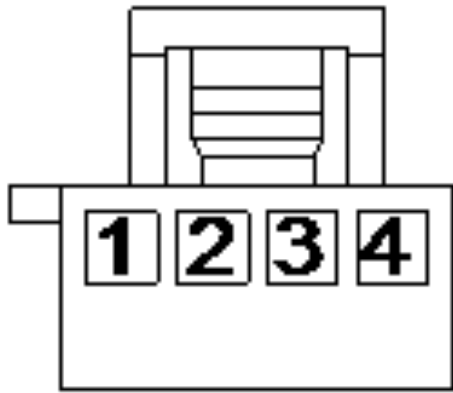
**Isometric View:**





**Wire Insertion Side:**





**NOTE:** When connector cavities are identified as "NO CONNECT" in the following table, there may be “Dummy (blunt cut) wires” or Cavities may be “Open”, “Plugged, or “Flashed over” depending on vehicle option content.

Pin	Circuit	Wire Color	Gauge/Size	Function	Option
1	C36	BU/BN	0.50	SNSR IN CAR TEMP SIG	
2	C37	BU/OG	0.50	SNSR IN CAR TEMP RTN	
3	F925	PK/YE	0.35	FUSED IGNITION RUN CONTROL OUTPUT	
4	Z911	BK	0.35	GROUND	