

Tazer Cable:

<https://zautomotive.com/product/video-cable/>

Tazer Instructions for installing cable from Radio to engine compartment - Use these instructions to get all items run to front where you want to install the camera:

<https://zautomotive.com/wp-content/uploads/2018/06/Tazer-JL-AV-Cable-install-guide.pdf>

Tazer JL used to enable the Cargo Camera... Now this is a bit expensive however this product is used to help setup many things from lights, tire / gear changes, tpms, and other items... I use this for many things as I went from Halogens to Quake Halo LED and Morimoto turns and used this to change settings in system to LED enable:



<https://zautomotive.com/product/tazer-jl/>

Tazer JL Instructions:

<https://www.zautomotive.com/zpu/instructions/TazerJLUserGuide1106.pdf>

The camera I used is below:

I tested many and this had the best image without paying a fortune... Just make sure the camera you get is meant to be used as a front camera... Many have ability to do both by cutting a loop wire or pressing a button but I found this one had great image without sacrificing quality... This camera is only meant for the front as this company makes one for rear and front only so be sure you clarify before purchasing your camera... Most of these cameras have the same type of connections:

- A power cable with a + (red) and - (black) wire
- It should then have a sep RCA cable (20' for this camera) that runs from front through firewall and behind dash to radio to connect to your zAutomotive RCA cable... You can tape up the red wires on the yellow RCA cable jacks as those are not needed in this type of installation for OEM system:



https://www.amazon.com/gp/product/B01ECP9GP8/ref=ppx_yo_dt_b_asin_title_o04_s00?ie=UTF8&psc=1

Here's the test video

<https://youtu.be/BCceeyJu53A>

If you don't have the Aux switches installed in your Jeep and I use the Aux 3 Wire:



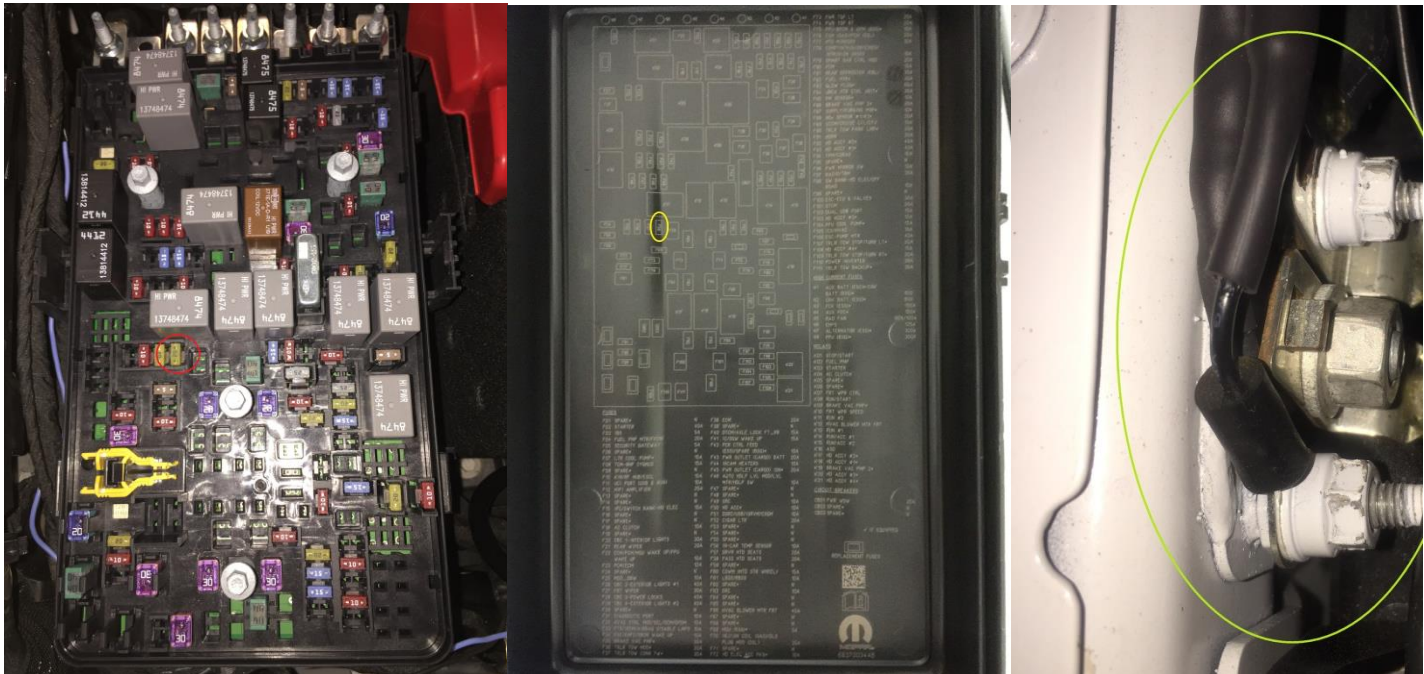
I didn't have the Aux switches originally and added them as one of the first mods using the Tazer JL to enable them by using the following fuse tap method:

https://www.amazon.com/gp/product/B0759JVKX6/ref=ppx_yo_dt_b_asin_title_o07_s00?ie=UTF8&psc=1

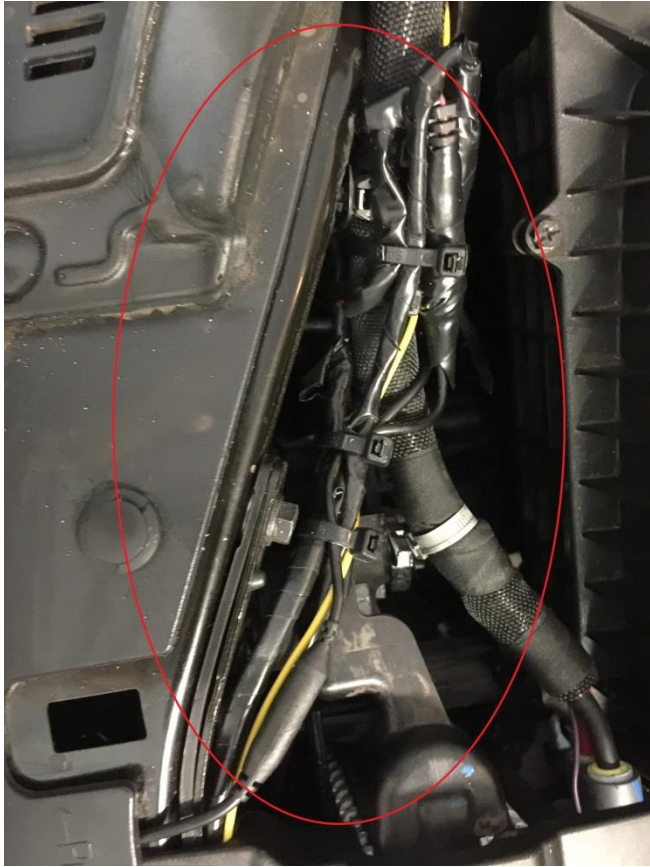
Dual Circuit Car Auto Truck Micro2 Fuse Adapter Tap



I used Micro2 Fuse Tap in P58 for passenger heated seats... Depending on your needs there are several fuses that can be tapped but you want one that only comes on with the ignition or accessories and not running of the battery all of the time... For grounding I used a ring terminal similar to above that I crimped and used a heat gun to shrink the insulator for a solid connection and then



I ran the RCA Cable across the front top cross member in front of the radiator over to passenger side between the back of grill and air cleaner housing... I also ran the power connector to same area by running it behind the battery and under the air cleaner intake... Please note in the top picture below I have already made the connections, used some electrical tape to isolate them from some of the elements, and zip tied:

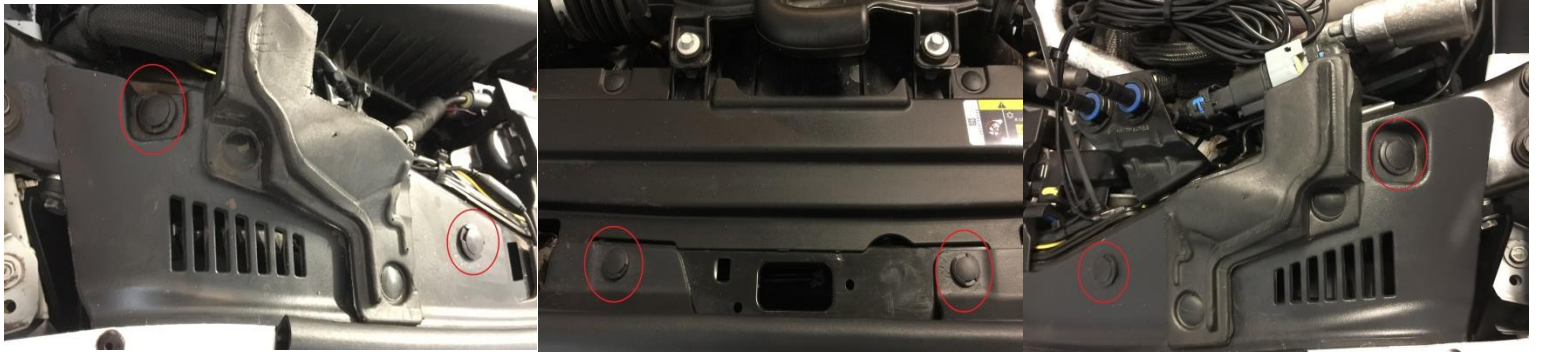


Now to install the camera you will need to remove the grill by using a trim tool and removing the 6 push pins from the top of the grill...

Passenger Side

Middle

Drivers Side



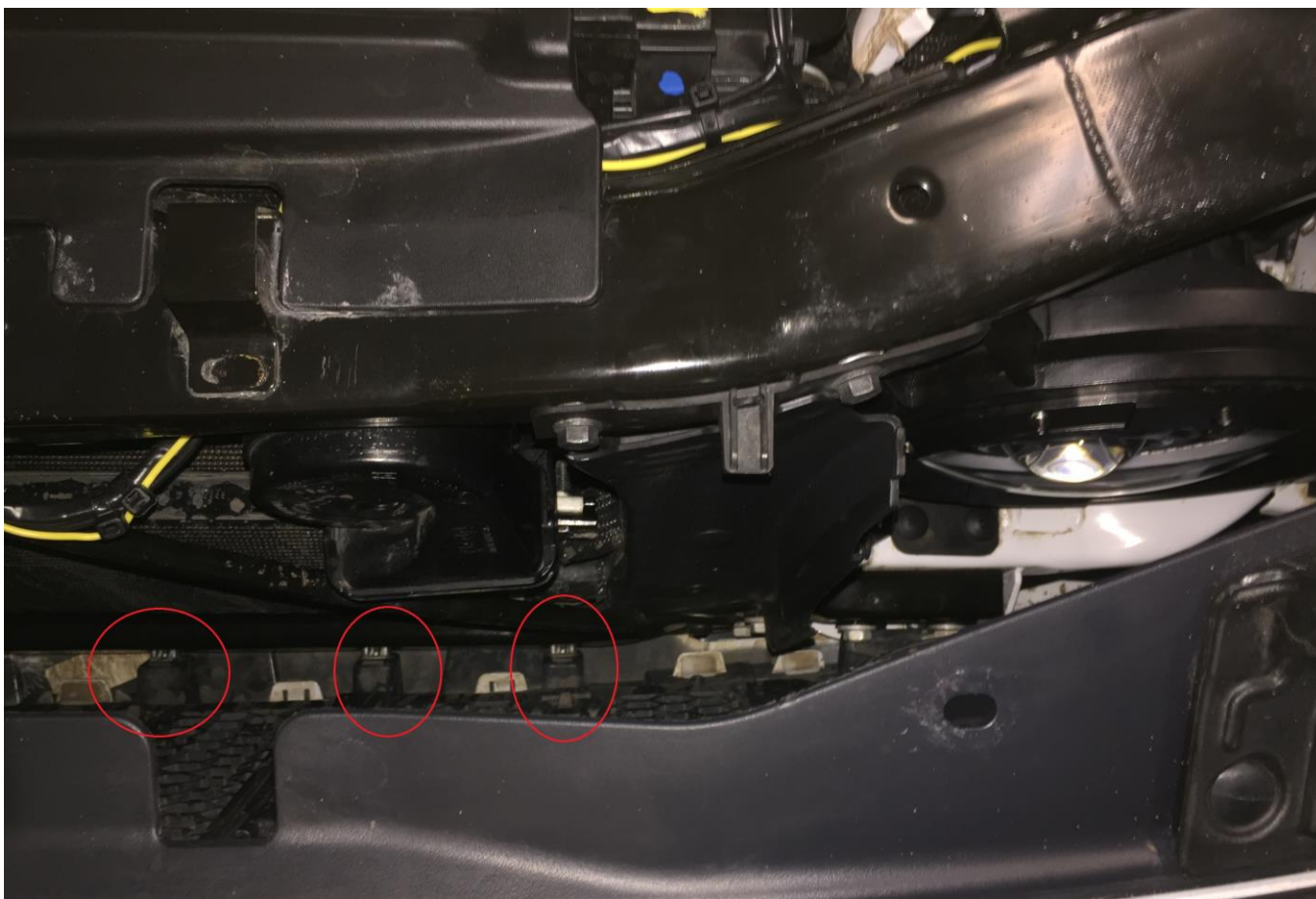
Put trim tool or a flat head screw driver under head of push pin and pry up as shown below... Try not to pull pin completely out... Once it look like the 2nd image then go under the push pin and pry out the whole pin from grill and frame... It should now look like the last image on this page...



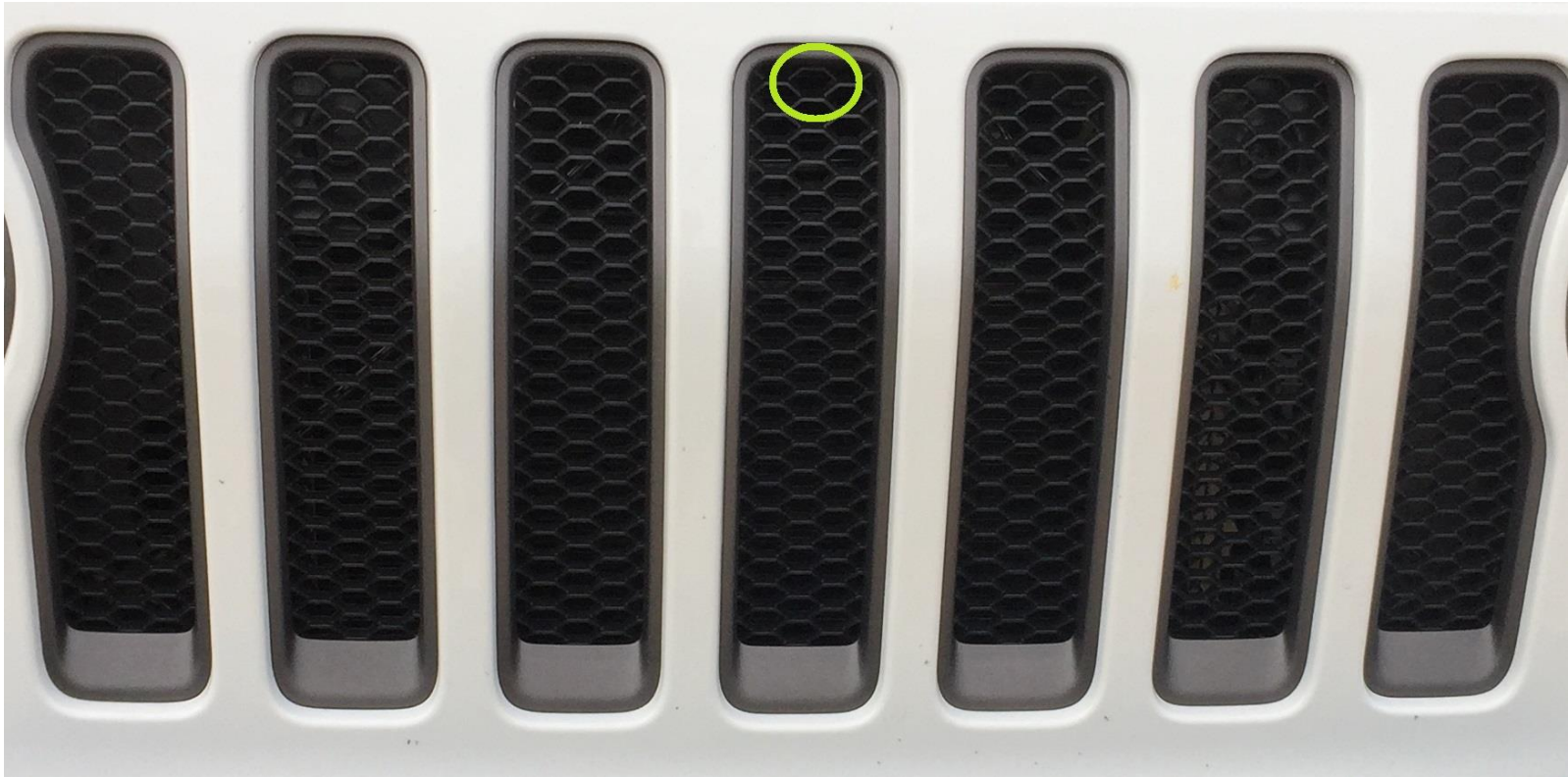
Now on the Passenger and drivers side pull up from the corner to unseat the grill to pull it away from frame:



Now the grill is held on by clips that click into place on the grill at the bottom... If you hold the top on one side and pull up while pulling the grill away from the frame it should come off easily as you work your way across the front of the grill... Now it's up to you if you want to install the camera on a flat surface or in my case I just installed it pulled away from the frame...



Next I put a strip of 3m double sided tape on the back of camera plate then I pushed the red power connector then the yellow RCA jack through the hole on the grill shown below...



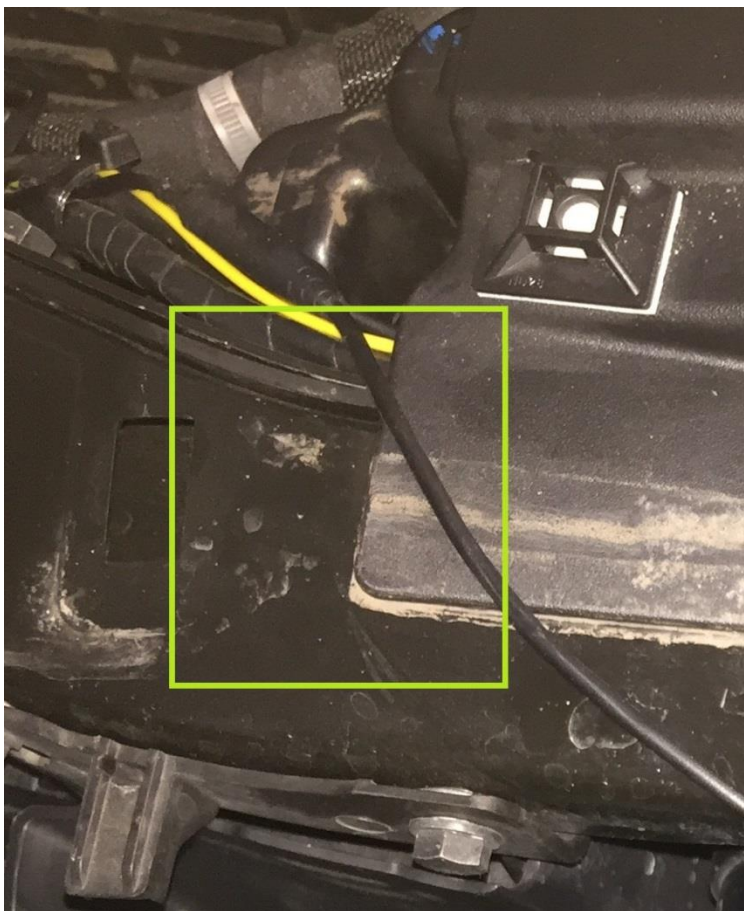
I then used some threaded screws with nuts and washers (purchased from the local hardware store) that were long enough to go all the way through the mounting plate and about $\frac{1}{2}$ " to $\frac{3}{4}$ " in the back of the grill... I also picked up some plates as shown below that I drilled a hole through then put some 3M double sided tape on the back as well... The tape not only adds extra holding but also cushions the camera by both plate when tightened from coming loose... The last thing I did was put some silicone on the back side of the nuts to keep them from backing off and seal the threads from corrosion...



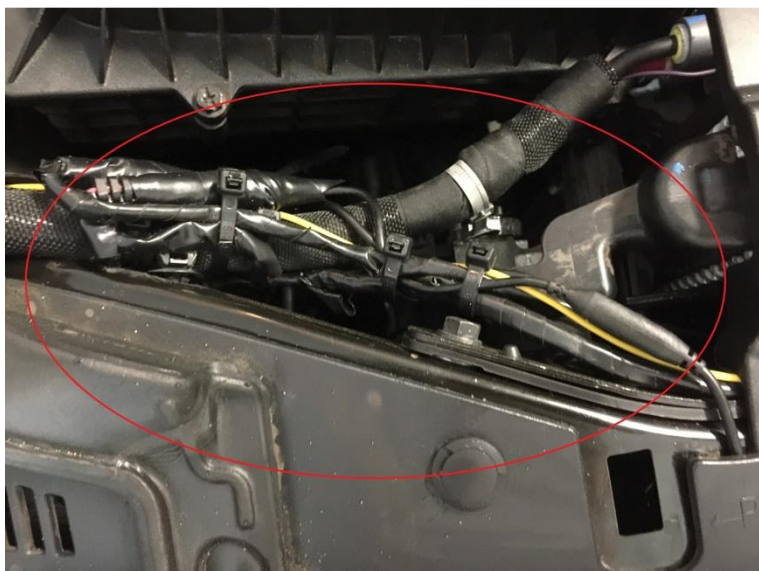
Now at this point I routed the camera wire over the frame not under to make it easier to remove if I ever have to pull the grill for something else...



So now just put the grill back on by lining up those clips in the bottom and then push top back on locking in place... Please note when putting the top section back on just make sure to route the wire around that plastic corner as you will still be putting the push pins back in top of grill... once you have the top fully in place just push on the bottom of the grill or tap all the way across to ensure all of the clips seat properly... You should hear them click as you go...



Now you can just make all of the connections for the power and RCA, tape them up if you like then zip tie all of the wires...



You can now play around with it once you have used the Tazer to enable the Cargo camera... Here is the close up and a full view to where the camera is barely noticeable... For me it works great as many times I head out without a spotter available and it sure helps being able to see over the top of a blind hill or obstacles in my track...

