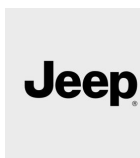
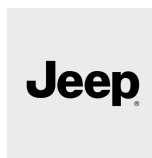


2019 WRANGLER SPORT 4X4

\$34,870
NET PRICE

YOUR CONFIGURATION

POWERTRAIN

**3.6L V6 24V VVT Engine Upg I w/ESS**
Sales code: ERC**Standard****6-Speed Manual Transmission**
Sales code: DEM**Standard****Anti-Spin Differential Rear Axle**
Sales code: DSA**\$595****3.45 Axle Gear Ratio**
Sales code: DLK**Standard****Engine Block Heater**
Sales code: NHK**\$95**

PACKAGES

**Trailer Tow Grp w/ HD Electrical and 4 Aux Switches**
Sales code: ADH**\$795**

EXTERIOR



Sting-Gray Clear-Coat Exterior Paint
Sales code: PDN_03

Included



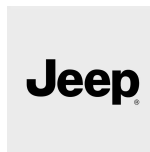
Black Freedom Top® 3-Piece Hard Top
Sales code: HT1

\$1,195



17-Inch x 7.5-Inch Black Steel Styled Wheels
Sales code: WD2

Standard



245/75R17 All-Terrain Tires
Sales code: TQL

Included



Deep Tint Sunscreen Windows
Sales code: GCD

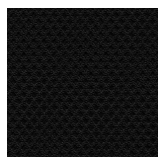
\$495



Hinge-Gate Reinforcement by Mopar®
Sales code: XDB

\$675

INTERIOR



Cloth Seats with Adjustable Head Restraints
Sales code: A7
Black Interior Color
Sales code: A7_X9_01

Standard



Uconnect® 3 with 5-Inch Display
Sales code: UAA

Standard



Cargo Tub Liner by Mopar®
Sales code: CK5

\$35



Air Conditioning
Sales code: HAA

\$1,295



All-Weather Floor Mats
Sales code: CWA

\$150

ALL STANDARD FEATURES

FUEL EFFICIENCY

EPA est. MPG

- EPA est. MPG 17 city/25 hwy

INTERIOR & EXTERIOR

Climate Control Options

- Heater with Instrument Panel Ventilation

Mirrors

- Rear View Day / Night Mirror

Additional Equipment Groups

- Single Top Package

Other(s)

- Gross Vehicle Weight / Payload Rating
- Monotone Paint
- Normal Duty Suspension

PERFORMANCE

Transmission

- 6-Speed Manual Transmission

Axles - Front

- 3rd Generation Dana® 44 HD Rear Axle
- 3rd Generation Dana® Solid Front Axle
- Conventional Differential Front Axle
- Conventional Differential Rear Axle

Axles - Gear Ratios

- 3.45 Axle Gear Ratio

SAFETY & SECURITY

Safety & Security Systems

- Electronic Roll Mitigation
- Electronic Stability Control
- Hill Start Assist
- ParkView® Rear Back-Up Camera
- Tire Pressure Monitoring Display
- Traction Control
- Trailer Sway Damping

Air Bags

- Advanced Multistage Front Air Bags
- Supplemental Front Seat Side Air Bags

Restraint Systems

- Child Seat Upper Tether Anchorage

Locks & Keys

- Keyless Go™
- Sentry Key® Theft Deterrent System

Additional Safety & Security Features

- Dual Note Electric Horns

- Front Passenger Seat Belt Alert
- Headlamp Off Time Delay
- Outside Temperature Gauge
- Vehicle Information Center

DIMENSIONS & CAPACITIES

Exterior Dimensions

- Ground Clearance - Approach Angle **41.4**
- Ground Clearance - Breakover Angle **25**
- Ground Clearance - Departure Angle **35.9**
- Overall Body Width **73.8**
- Overall Height **73.6**
- Overall Length **166.8**
- Running Ground Clearance **9.7**
- Track - Front **62.9**
- Track - Rear **62.9**
- Turning Diameter - curb-to-curb - Left **34.5**
- Turning Diameter - curb-to-curb - Right **34.5**
- Wheelbase **96.8**

Interior Dimensions

- Cargo Capacity - Rear Seats Folded **72.4**
- Head Room - Front **42.6**
- Head Room - Rear **41.7**
- Hip Room - Front **53.9**
- Hip Room - Rear **45**
- Leg Room - Front **41.2**
- Leg Room - Rear **35.7**
- Passenger Interior Volume **103.7**
- Seating Capacity - Maximum Seating **4**
- Seating Capacity - Standard Seating **4**
- Shoulder Room - Front **55.7**
- Shoulder Room - Rear **57.7**
- Total Passenger Plus Cargo Volume **150.4**
- Trunk Lift-Over Height **29.7**

Capacities/Weights

- Base Weight - With Automatic Trans **Not Available**
- Base Weight - with Manual Transmission **Not Available**
- Capacity/Weights - Fuel Tank Capacity **18.5**
- Curb Weight - Automatic Trans **3,955**
- Curb Weight - Manual Trans **3,970**
- Payload Capacity - When Properly Equipped - Standard **Not Available**
- Towing Capacity - Maximum **2,000**
- Weight Distribution - Automatic Trans - Front **Not Available**
- Weight Distribution - Automatic Trans - Rear **Not Available**
- Weight Distribution - Manual Trans - Front **Not Available**
- Weight Distribution - Manual Trans - Rear **Not Available**

Basics

- Brakes - Front **Vented Rotor**
- Brakes - Rear **Solid Rotor**

- Driveline Configuration **4WD-PT**
 - EPA Classification **Multipurpose Vehicle**
 - Maximum Number of Doors **2**
 - Steering **Electro- Hydra Power**
 - Suspension - Front **Coil Springs**
 - Suspension - Rear **Coil Springs**
 - Tires - Aspect Ratio **75**
 - Tires - Construction **R**
 - Tires - Spare Tire Type **Full Size**
 - Tires - Type **P**
 - Tires - Wheel Diameter **17**
 - Tires - Width **245**
 - Tops - Standard Top **SR**
 - Vehicle Type **Sport Utility Vehicle**
-

WARRANTY

Warranty

- Basic - Miles **36,000**
 - Basic - Months **36**
 - Powertrain - Miles **60,000**
 - Powertrain - Months **60**
 - Roadside Assistance - Miles **100,000**
 - Roadside Assistance - Months **60**
 - Rust-Through - Miles **100,000**
 - Rust-Through - Months **60**
-

POWERTRAIN

Powertrain

- Displacement - Bore **3.78**
- Displacement - Cubic Centimeters **3,604**
- Displacement - Cubic Inches **220**
- Displacement - Stroke **3.27**
- Engine - Compression Ratio **11.3**
- Engine - Configuration **3.6L V6**
- Engine - Location **Front**
- Engine - Supercharged **No**
- Final Drive Ratio - Standard **3.45**
- Fuel Economy - City **17**
- Fuel Economy - Combined **20**
- Fuel Economy - Drive Range **462**
- Fuel Economy - Highway **25**
- Fuel System **Sequential Multi-Point Injection**
- Fuel Type **Gas**
- Performance - Horsepower **285**
- Performance - HP Rated RPM **6,400**
- Performance - Torque **260**
- Performance - Torque Rated RPM **4,800**
- Transmission - Automatic or Manual or Electrically Variable **Manual**
- Transmission - Features Overdrive **Yes**
- Transmission - Number of Forward Speeds **6**

- Valvetrain - Configuration **DOHC**
 - Valvetrain - Number of Valves **24**
-

ENGINE & TRANSMISSION

Engine

- 3.6L V6 24V VVT Engine Upg I w/ESS
-

MECHANICAL FEATURES

Transfer Cases

- Command-Trac Part-Time 4WD System

Brakes

- 4-Wheel Disc Anti-Lock Brakes
- Hydraulic Assist Brake Booster

Battery

- 650 Amp Maintenance Free AGM Battery
- Aux Battery

Alternators

- 180 Amp Alternator

Fuel Tanks

- 17.5-Gallon Fuel Tank

Steering Systems

- Power Steering

Emissions

- 50 State Emissions

Additional Mechanical Features

- 2-Front and 1-Rear Tow Hooks
 - Engine Oil Cooler
 - Fuel Tank Skid Plate Shield
 - Jeep® Tool Kit
 - Protective Coating and Remover
 - R1234YF A/C Refrigerant
 - Stop-Start Dual Battery System
 - Tilt / Telescope Steering Column
 - Transfer Case Skid Plate Shield
 - Transmission Skid Plate
-

EXTERIOR FEATURES

Glass

- Solar Control Glass
- Tinted Windshield Glass

Tires

- 245/75R17 All-Season Tires

Wheels

- 17-Inch x 7.5-Inch Black Steel Styled Wheels

Wheel Options

- Exterior Tire Carrier

Tops

- Black Sunrider® Soft Top (NA w/Sky 1-Touch Pwr Top)

Exterior Mirrors

- Black Exterior Mirrors
- Manual Mirrors with Fold-Away

Doors

- Black Door Handles
- Front Door Tinted Glass
- Full Doors with Roll-up Windows

Lighting

- Cargo Lamp
- Center High-Mounted Stop Lamp
- Courtesy Lamps
- Front Dome with On / Off Switch Lamp
- Front Fog Lamps
- Front Side Marker / Side Repeater Lamp
- Halogen Headlamps
- Incandescent Tail Lamps

Bumpers & Fascias

- Molded Black Front Bumper
- Molded Black Rear Bumper

Grilles

- Body-Color Grille

Wiper Systems

- Variable Intermittent Windshield Wipers

Exterior Design

- "Jeep" Badge
- "Sport" Badge
- "Trail Rated" Badge
- Accent Color Fender Flares
- Black Front Frame Overlay
- Black Fuel-Filler Bezel
- Non-Locking Fuel-Filler Cap
- Tethered Fuel-Filler Cap

Additional Exterior Features

- Body-Color Sport Bar

SEATING & TRIM

Seat Types

- Cloth Seats with Adjustable Head Restraints

Seating Configurations

- Manual 4-Way Front Passenger Seat

Seat Features

- Driver Height Adjuster Seat
- Easy Access Driver Seat
- Easy Access Passenger Seat
- Low-Back Bucket Seats
- Manual 2-Way Adjustable Lumbar Driver Seat
- Manual 6-Way Driver Seat
- Occupant Classification System
- Rear Folding Seat
- Reclining Front Seats
- RR Head Restraints Outboard Seating

AUDIO & UCONNECT® MULTIMEDIA

Sound System Components

- 5.0-Inch Touchscreen Display
- Audio Jack Input for Mobile Devices
- Fixed Long Mast Antenna
- Integrated Voice Command with Bluetooth®
- Media Hub (USB, Aux)
- Remote USB Port
- Steering Wheel Mounted Audio Controls

Speaker Systems

- 8-Speakers

Sound Systems

- Uconnect® 3 with 5-Inch Display

INTERIOR FEATURES

Consoles & Storage

- Cargo Tie-Down Loops
- Full-Length Floor Console
- Rear Compartment Storage Tray
- Rear Seat / Wheelhouse / Cargo Carpet
- Storage Tray

Windows & Locks

- Manual Door Locks
- Manual Windows

Floor Mats

- Front Floor Mats

Interior Design

- 120 MPH Primary Speedometer
- Base Interior Accents
- Cluster 3.5-Inch TFT B&W Display
- Front Seat Area Carpet
- Silver Platinum Instrument Panel Bezels
- Urethane Steering Wheel

Additional Interior Features

- 12-V Auxiliary Power Outlet
- 12-Volt Rear Auxiliary Power Outlet
- Cruise Control
- Front Seat Back Map Pockets
- Hood Insulation
- Illuminated Cup Holders
- Locking Glove Box
- Passenger Assist Handles
- Sliding Sun Visors with Mirrors
- Urethane Shift Knob

TOTAL OF ADDED OPTIONS

\$5,330

PAYMENT SUMMARY	Buy	Lease
Monthly Payment	\$592	\$325
MSRP*	\$28,045	\$28,045
Added Options	\$5,330	\$5,330
Destination Charges	\$1,495	\$1,495
Down Payment	-\$3,487	-\$3,487
	(10%)	(10%)
Term Duration	60 Months	48 Months
Percentage Rate (APR)	4.98%	5.472%
Estimated Selling Price	\$31,383	-
Estimated Capitalized Costs	-	\$31,383

*MSRP excludes destination, taxes, title and registration fees. Starting at price refers to the base model, optional equipment not included. A more expensive model may be shown. Pricing and offers may change at any time without notification. To get full pricing details, see your dealer.

01-13-19

DATE