



March 2023

Dealer Service Instructions for:

# Equipment Campaign 29A

## Frame Stud

---

### Remedy Available

**MOPAR Frame Assembly 68495556AA**

**MOPAR Frame Assembly 68495556AB**

**MOPAR Frame Assembly 68438094AB**

**MOPAR Frame Assembly 68438096AB**

*This recall applies only to the above short wheelbase frames (Body Style: JL72) intended for use on 2018-2023 (JL) Jeep Wrangler vehicles.*

### Subject

Some of the above frames may have been built with an unnecessary and unused frame stud. When installed in a vehicle, the frame stud may contact the fuel tank in a crash, which, in certain circumstances, can cause a fuel leak. A fuel leak in the presence of a competent ignition source may result in a fire, increasing the risk of occupant injury and/or injury to persons outside the vehicle.

**Repair**

Inspect the frame and, if necessary, remove the frame stud then apply black paint to the removed stud area.

**NOTE: Same remedy procedure applies to frames installed in vehicle or not.**

**Parts Information**

**NOTE: Paint is required ONLY for vehicles/frames that have stud removed:**  
**An equivalent black paint can be used if specified paint is not available.**

<u>Part Number</u>	<u>Qty.</u>	<u>Description</u>
04443609AB OR 68626414AA (Or equivalent black paint)	As Required	PAINT, Touch Up Spray Black (142g / 5oz) (Each spray can will repair 25 vehicles)

**Parts Return**

No parts return required for this campaign.

**Special Tools**

No special tools are required to perform frame stud removal service procedure.

## Inspection Procedure (Off Vehicle)

### A. Frame Stud Inspection (Off Vehicle)

Visually look for a stud on the frame in the location shown in (Figure 1).

- **Frame Stud Located:** Proceed to **Section D. Frame Stud Removal** for stud removal procedure and perform only **Steps 1 - 3** then claim the “Off Vehicle” stud removal LOP.
- **Frame Stud Does NOT Exist:** No further action required. Claim the “Off Vehicle” stud inspection LOP.

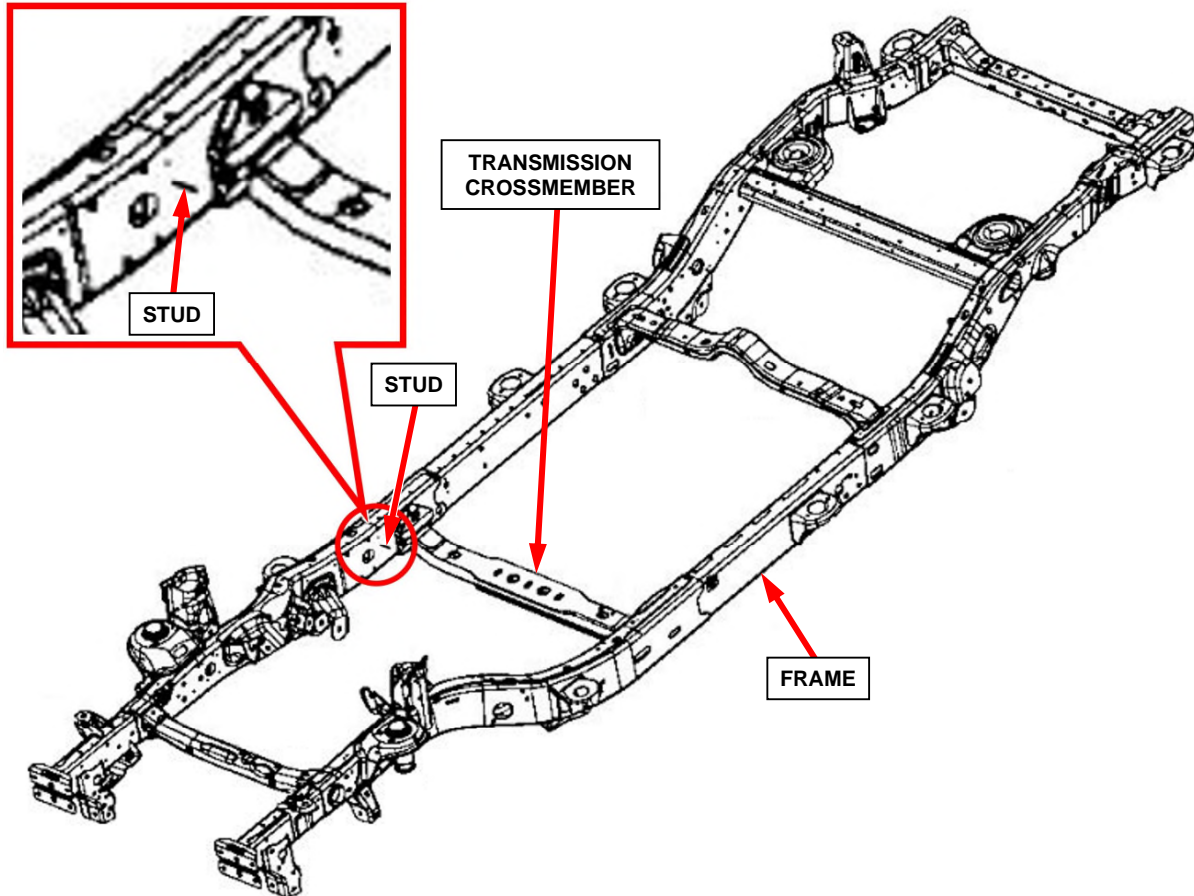


Figure 1 – Frame Stud Location – Inspect for Frame Stud

## Inspection Procedure (On Vehicle)

### B. Frame Label Inspection

1. Look for a label on the driver side frame rail just rearward of the door hinges.
2. If the label looks like (Figure 2) and is readable not missing or covered over by an aftermarket coating material, then read the label as instructed in (Figure 2).
3. If the label does NOT look like (Figure 2) or is unreadable, missing, or covered over by an aftermarket coating material, then proceed to **Section C. Frame Stud Inspection.**

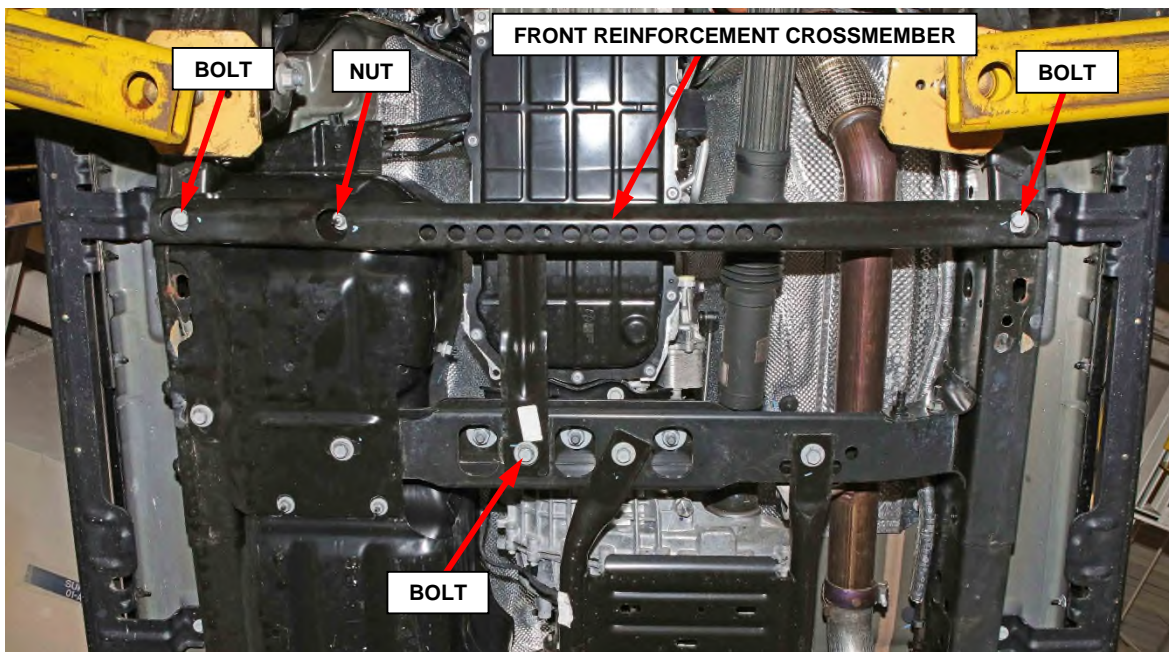


Figure 2 – Front Reinforcement Crossmember

4. What were the first two characters on the label as instructed in (Figure 2).
  - First two characters were “TT” – No further action required. Claim the appropriate inspection LOP and return vehicle to customer.
  - First two characters were some other combination of characters - Proceed to **Section C. Frame Stud Inspection.**

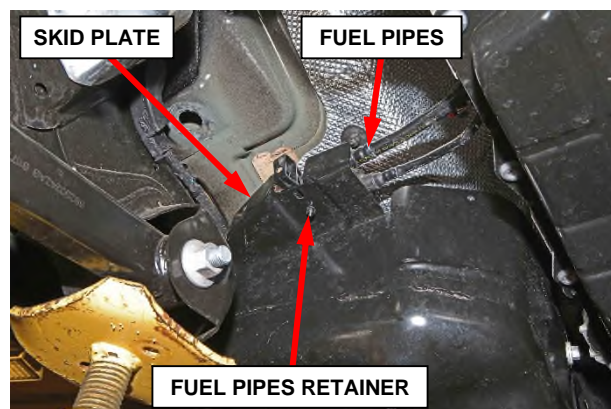
**Inspection Procedure (On Vehicle) [Continued]****C. Frame Stud Inspection (On Vehicle)**

1. Raise and support the vehicle.
2. Remove the fasteners, three bolts and one nut securing the front reinforcement crossmember then remove the crossmember from the vehicle (Figure 3).



**Figure 3 – Front Reinforcement Crossmember**

3. Release the fuel pipe retainer from the fuel tank front skid plate (Figure 4).



**Figure 4 – Fuel Pipes Retainer**

## Inspection Procedure (On Vehicle) [Continued]

4. Remove the fasteners, two bolts and three nuts securing the fuel tank front skid plate then remove the skid plate from the vehicle (Figure 5).

**NOTE:** Nut locations on skid plate are slotted so nuts do not need to be fully removed.

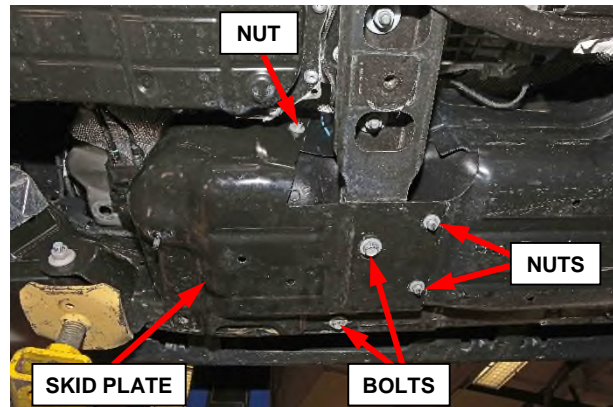


Figure 5 – Fuel Tank Front Skid Plate

5. Visually look for a stud on the frame in the location shown in (Figure 6).
- **Frame Stud Located:** Proceed to **Section D Frame Stud Removal** for stud removal procedure. Do NOT continue with Inspection Procedure.
  - **Frame Stud Does NOT Exist:** Continue with **Inspection Procedure** to reassemble the vehicle. Section D is not required if no stud exists.

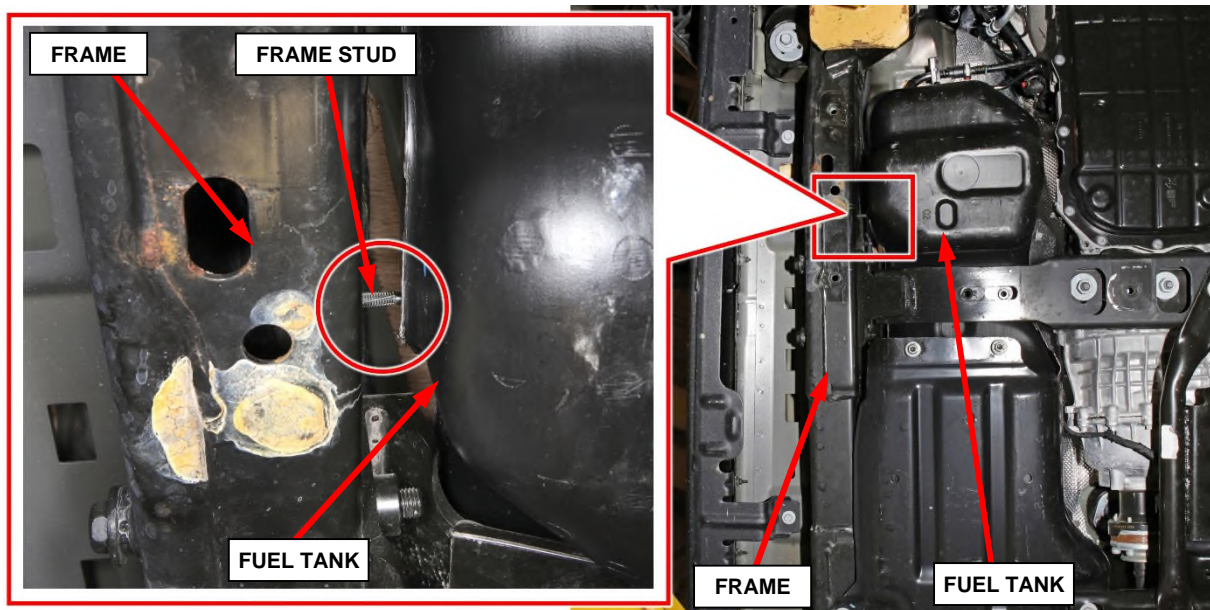


Figure 6 – Frame Stud Location – Inspect for Frame Stud

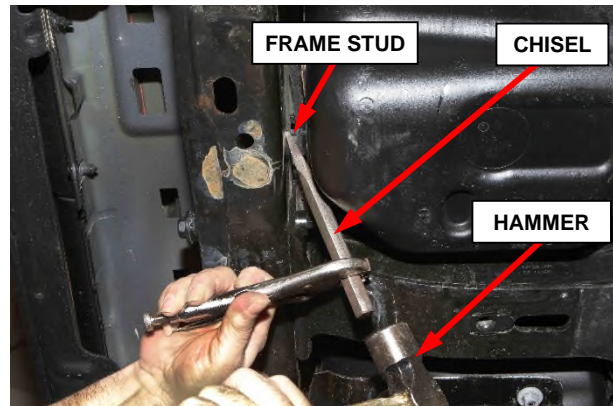
**Inspection Procedure (On Vehicle) [Continued]**

6. Position the fuel tank front skid plate to the vehicle then install and tighten the fasteners, two bolts and three nuts (Figure 5).
  - Bolts: 75 N·m (55 ft. lbs.)
  - Nuts: 20 N·m (15 ft. lbs.)
  
7. Install the fuel pipe retainer to the fuel tank front skid plate (Figure 4).
  
8. Position the front reinforcement crossmember to the vehicle then install and tighten the three bolts and one nut (Figure 3).
  - Bolts crossmember to outer frame rails: 95 N·m (70 ft. lbs.)
  - Bolt crossmember center leg to crossmember: 75 N·m (55 ft. lbs.)
  - Nut: 20 N·m (15 ft. lbs.)
  
9. Lower the vehicle and return to the customer or inventory.
  
10. Claim the Inspection LOP.

**Service Procedure**

**D. Frame Stud Removal**

1. Using a suitable chisel and hammer, cut the stud off as close to the frame as possible (Figure 7).



**Figure 7 – Remove Frame Stud**

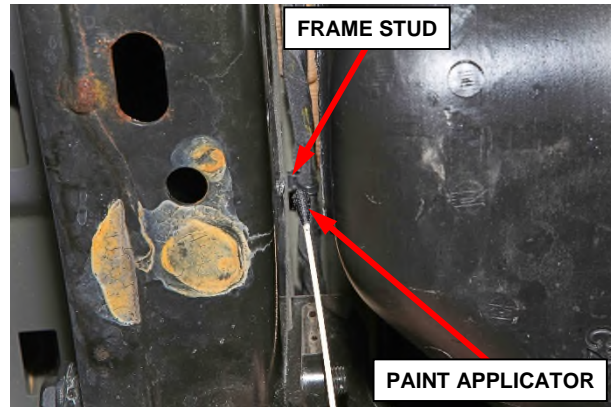
2. After removing the frame stud (Figure 8).



**Figure 8 – Frame Stud Removed**

**Service Procedure [Continued]**

3. Obtain black spray paint specified in the Parts Section and a brush or cotton swab or suitable applicator. Spray a small amount of paint into a cup to dip the applicator or directly onto the applicator then apply the paint to the vehicle frame covering any bare exposed metal in the location of the removed frame stud (Figure 9).

**Figure 9 – Apply Paint to Frame Stud**

4. Position the fuel tank front skid plate to the vehicle then install and tighten the fasteners, two bolts and three nuts (Figure 5).
  - Bolts: 75 N·m (55 ft. lbs.)
  - Nuts: 20 N·m (15 ft. lbs.)
5. Install the fuel pipe retainer to the fuel tank front skid plate (Figure 4).
6. Position the front reinforcement crossmember to the vehicle then install and tighten the three bolts and one nut (Figure 3).
  - Bolts crossmember to outer frame rails: 95 N·m (70 ft. lbs.)
  - Bolt crossmember center leg to crossmember: 75 N·m (55 ft. lbs.)
  - Nut: 20 N·m (15 ft. lbs.)
7. Lower the vehicle and return to the customer or inventory.
8. Claim the stud removal LOP.

**Completion Reporting and Reimbursement**

Claims for vehicles that have been serviced must be submitted on the DealerCONNECT Claim Entry Screen located on the Service tab. Claims submitted will be used by FCA Canada to record campaign service completions and provide dealer payments.

Parts listed on any campaign are required for the repair but may not always be eligible for reimbursement. As stated in the Service Administration Manual; Normal shop supplies, such as general-purpose cleaners, solvents, lubricants, etc. submitted on claims are subject to non-payment or chargeback.

Use one of the following labour operation numbers and time allowances:

	<b>Labour Operation Number</b>	<b>Time Allowance</b>
Inspection (Off Vehicle) - No Frame Stud Inspection (On Vehicle) - Label “TT” Not Suspect Frame	13-29-A1-80	0.2 hours
Inspection (On Vehicle) - No Frame Stud	13-29-A1-81	0.4 hours
Inspect/Remove Frame Stud (On Vehicle)	13-29-A1-82	0.5 hours
Inspect/Remove Frame Stud (Off Vehicle)	13-29-A1-83	0.3 hours

In addition, enter “MATL” in the Part Number section of your claim with the applicable Material Allowance where appropriate.

## **Owner Notification and Service Scheduling**

All involved equipment purchasers known to FCA are being notified of the service requirement by first class mail. They are requested to schedule appointments for this service with their dealers. A generic copy of the owner letter is attached.

## **Additional Information**

If you have any questions or need assistance in completing this action, please contact your Service and Parts District Manager.

FCA Canada Inc.

A handwritten signature in black ink, appearing to read "J.D. Kiritsis". The signature is stylized with a large initial "J" and "K".

J.D. Kiritsis  
National Service and Parts Manager



### CAMPAIGN NOTIFICATION

An important improvement for your vehicle is available.

### NOTIFICATION DE CAMPAGNE

Une amélioration importante pour.

SCAN TO VIEW  
RECALLS



FIAT CHRYSLER AUTOMOBILES

## EQUIPMENT CAMPAIGN 29A FRAME STUD

Dear Vehicle Owner:

**FCA CANADA INC., (FCA) HAS ANNOUNCED AN EQUIPMENT CAMPAIGN ON CERTAIN MOPAR FRAME ASSEMBLIES: 68495556AA, 68495556AB, 68438094AB, 68438096AB INTENDED FOR USE WITH 2018 THROUGH 2023 MODEL YEAR JEEP® WRANGLER 2-DOOR SHORT WHEELBASE VEHICLES.**

### Your vehicle must be repaired because:

FCA records indicate that you may have purchased a Mopar frame assembly for your vehicle. Some of the above Jeep Wrangler frames may have been built with an unnecessary and unused frame stud. When installed in a vehicle, the frame stud may contact the fuel tank in a crash, which, in certain circumstances, can cause a fuel leak.

**A fuel leak in the presence of a competent ignition source may result in a fire, increasing the risk of occupant injury and/or injury to persons outside the vehicle.**

We apologize for any inconvenience and thank you for your attention to this very important matter.

### FCA Canada Inc.

National Service and Parts Manager



### What You Must Do:

Contact an authorized FCA Canada dealer to schedule a service appointment.



### What Your Dealer Will Do:

**FCA will repair your vehicle free of charge.** To do this, your dealer will inspect the frame and, if necessary, remove the frame stud and apply paint. We recommend that you schedule a service appointment to minimize your inconvenience. Estimated repair time for on vehicle inspection/repair of frame is 30 minutes. Please bring your vehicle or uninstalled frame and this letter with you to your dealership. However, additional time may be necessary depending on how dealer appointments are scheduled and processed.

## FREQUENTLY ASKED QUESTIONS



**WHERE CAN I FIND MORE INFORMATION ON THIS RECALL OR ANY OTHER RECALL AFFECTING MY VEHICLE?**

**By Web:** [recalls.mopar.ca](https://recalls.mopar.ca)

**By Phone:** (800) 465-2001

**By Email:** [www.fcacanada.ca/en/contact\\_us.php](http://www.fcacanada.ca/en/contact_us.php)

**By Mail:** FCA Canada Customer Care Centre  
P.O. Box 1621, Windsor, ON N9A 4H6



**WHAT IF I ALREADY PAID TO HAVE THIS REPAIR COMPLETED?**

If you have already experienced this specific condition and have paid to have it repaired, you will still be required to have the campaign performed by an authorized FCA Canada dealer at no charge to you. Once completed, please send your original receipts and/or adequate proof of payment along with the campaign invoice to the following address for **further review of possible reimbursement**: FCA Canada Customer Care Centre, P.O. Box 1621, Windsor, ON N9A 4H6.



**HOW DO I UPDATE MY NAME AND ADDRESS OR IF I NO LONGER OWN THIS VEHICLE?**

Contact the Customer Name & Address Call Centre at 1-800-373-1474 to update your information.

FCA IS THE MANUFACTURER OF THE FOLLOWING

