

# 2019 WRANGLER UNLIMITED SPORT S 4X4

## YOUR CONFIGURATION

**\$46,500**  
NET PRICE

### POWERTRAIN



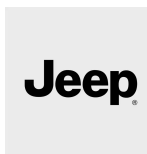
**3.6L V6 24V VVT Engine Upg I w/ESS**  
Sales code: ERC

Standard



**8-Speed Automatic Transmission**  
Sales code: DFT

**\$2,000**



**3.45 Axle Gear Ratio**  
Sales code: DLK

Standard

### PACKAGES



**7-Inch Radio Group**  
Sales code: AAN

**\$995**



**Convenience Group**  
Sales code: ADC

**\$395**



**Cold Weather Group**  
Sales code: ADE

**\$995**



**Trailer Tow Grp w/ HD Electrical and 4 Aux Switches**  
Sales code: ADH

**\$795**



**Jeep® Active Safety Group**  
Sales code: AJ1

**\$995**

## EXTERIOR



**Firecracker Red Clear-Coat Exterior Paint**  
Sales code: PRC\_01

**Included**



**Dual Top Group**  
Sales code: AEN

**\$2,295**



**Black Freedom Top® 3-Piece Hard Top**  
Sales code: HT1

**Included**



**17-Inch x 7.5-Inch Tech Silver Aluminum Wheels**  
Sales code: WF9

**Standard**



**245/75R17 All-Season Tires**  
Sales code: TQJ

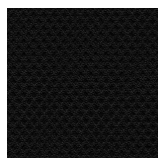
**Standard**



**Black Tube Steps by Mopar®**  
Sales code: MRU

**\$495**

## INTERIOR



**Cloth Seats with Adjustable Head Restraints**  
Sales code: A7  
**Black Interior Color**  
Sales code: A7\_X9\_01

**Standard**



**Uconnect® 4 with 7-Inch Display**  
Sales code: UAG

**Included**



**SiriusXM® Satellite Radio**  
Sales code: RSD

**Included**



**Alpine® 9-Speaker Premium Audio System**  
Sales code: RC4

**\$1,295**

## ALL STANDARD FEATURES

### FUEL EFFICIENCY

#### EPA est. MPG

- EPA est. MPG 17 city/23 hwy

### INTERIOR & EXTERIOR

#### Climate Control Options

- Air Conditioning

#### Mirrors

- Rear View Day / Night Mirror

#### Additional Equipment Groups

- Single Top Package

### Other(s)

- Monotone Paint
  - Normal Duty Suspension
- 

## PERFORMANCE

### Transmission

- 6-Speed Manual Transmission

### Axles - Front

- 3rd Generation Dana® 44 HD Rear Axle
- 3rd Generation Dana® Solid Front Axle
- Conventional Differential Front Axle
- Conventional Differential Rear Axle

### Axles - Gear Ratios

- 3.45 Axle Gear Ratio
- 

## SAFETY & SECURITY

### Safety & Security Systems

- Electronic Roll Mitigation
- Electronic Stability Control
- Hill Start Assist
- ParkView® Rear Back-Up Camera
- Security Alarm
- Tire Pressure Monitoring Display
- Traction Control
- Trailer Sway Damping

### Air Bags

- Advanced Multistage Front Air Bags
- Supplemental Front Seat Side Air Bags

### Restraint Systems

- Child Seat Upper Tether Anchorage

### Locks & Keys

- Remote Keyless Entry
- Sentry Key® Theft Deterrent System

### Additional Safety & Security Features

- Dual Note Electric Horns
  - Front Passenger Seat Belt Alert
  - Headlamp Off Time Delay
  - Outside Temperature Gauge
  - Vehicle Information Center
-

## DIMENSIONS & CAPACITIES

### Exterior Dimensions

- Ground Clearance - Approach Angle **41.4**
- Ground Clearance - Breakover Angle **20.3**
- Ground Clearance - Departure Angle **36.1**
- Overall Body Width **73.8**
- Overall Height **73.6**
- Overall Length **188.4**
- Running Ground Clearance **9.7**
- Track - Front **62.9**
- Track - Rear **62.9**
- Turning Diameter - curb-to-curb - Left **40.8**
- Turning Diameter - curb-to-curb - Right **40.8**
- Wheelbase **118.4**

### Interior Dimensions

- Cargo Capacity - Rear Seats Folded **72.4**
- Head Room - Front **42.6**
- Head Room - Rear **41.7**
- Hip Room - Front **53.9**
- Hip Room - Rear **56.7**
- Leg Room - Front **41.2**
- Leg Room - Rear **38.3**
- Passenger Interior Volume **103.7**
- Seating Capacity - Maximum Seating **5**
- Seating Capacity - Standard Seating **5**
- Shoulder Room - Front **55.7**
- Shoulder Room - Rear **55.7**
- Total Passenger Plus Cargo Volume **150.4**
- Trunk Lift-Over Height **29.7**

### Capacities/Weights

- Base Weight - With Automatic Trans **4,215**
- Base Weight - with Manual Transmission **4,201**
- Capacity/Weights - Fuel Tank Capacity **21.5**
- Curb Weight - Automatic Trans **3,955**
- Curb Weight - Manual Trans **3,970**
- Payload Capacity - When Properly Equipped - Standard **1,000**
- Towing Capacity - Maximum **3,500**
- Weight Distribution - Automatic Trans - Front **Not Available**
- Weight Distribution - Automatic Trans - Rear **Not Available**
- Weight Distribution - Manual Trans - Front **Not Available**
- Weight Distribution - Manual Trans - Rear **Not Available**

### Basics

- Brakes - Front **Vented Rotor**
- Brakes - Rear **Solid Rotor**
- Driveline Configuration **4WD-PT**
- EPA Classification **Multipurpose Vehicle**
- Maximum Number of Doors **4**
- Steering **Electro- Hydra Power**
- Suspension - Front **Coil Springs**

- Suspension - Rear **Coil Springs**
  - Tires - Aspect Ratio **75**
  - Tires - Construction **R**
  - Tires - Spare Tire Type **Full Size**
  - Tires - Type **P**
  - Tires - Wheel Diameter **17**
  - Tires - Width **245**
  - Tops - Standard Top **SR**
  - Vehicle Type **Sport Utility Vehicle**
- 

## WARRANTY

### Warranty

- Basic - Miles **36,000**
  - Basic - Months **36**
  - Powertrain - Miles **60,000**
  - Powertrain - Months **60**
  - Roadside Assistance - Miles **100,000**
  - Roadside Assistance - Months **60**
  - Rust-Through - Miles **100,000**
  - Rust-Through - Months **60**
- 

## POWERTRAIN

### Powertrain

- Displacement - Bore **3.78**
  - Displacement - Cubic Centimeters **3,604**
  - Displacement - Cubic Inches **220**
  - Displacement - Stroke **3.27**
  - Engine - Compression Ratio **11.3**
  - Engine - Configuration **3.6L V6**
  - Engine - Location **Front**
  - Engine - Supercharged **No**
  - Final Drive Ratio - Standard **3.45**
  - Fuel Economy - City **17**
  - Fuel Economy - Combined **19**
  - Fuel Economy - Drive Range **494**
  - Fuel Economy - Highway **23**
  - Fuel System **Sequential Multi-Point Injection**
  - Fuel Type **Gas**
  - Performance - Horsepower **285**
  - Performance - HP Rated RPM **6,400**
  - Performance - Torque **260**
  - Performance - Torque Rated RPM **4,800**
  - Transmission - Automatic or Manual or Electrically Variable **Manual**
  - Transmission - Features Overdrive **Yes**
  - Transmission - Number of Forward Speeds **6**
  - Valvetrain - Configuration **DOHC**
  - Valvetrain - Number of Valves **24**
- 

## ENGINE & TRANSMISSION

**Engine**

- 3.6L V6 24V VVT Engine Upg I w/ESS

---

**MECHANICAL FEATURES****Transfer Cases**

- Command-Trac Part-Time 4WD System

**Brakes**

- 4-Wheel Disc Anti-Lock Brakes
- Hydraulic Assist Brake Booster

**Battery**

- 650 Amp Maintenance Free AGM Battery
- Aux Battery

**Alternators**

- 180 Amp Alternator

**Fuel Tanks**

- 21.5-Gallon Fuel Tank

**Steering Systems**

- Power Steering

**Emissions**

- 50 State Emissions

**Additional Mechanical Features**

- 2-Front and 1-Rear Tow Hooks
- Engine Oil Cooler
- Fuel Tank Skid Plate Shield
- Jeep® Tool Kit
- Protective Coating and Remover
- R1234YF A/C Refrigerant
- Stop-Start Dual Battery System
- Tilt / Telescope Steering Column
- Transfer Case Skid Plate Shield
- Transmission Skid Plate

---

**EXTERIOR FEATURES****Glass**

- Deep Tint Sunscreen Windows
- Tinted Windshield Glass

**Tires**

- 245/75R17 All-Season Tires

**Wheels**

- 17-Inch x 7.5-Inch Tech Silver Aluminum Wheels

### Wheel Options

- Exterior Tire Carrier

### Tops

- Black Sunrider® Soft Top (NA w/Sky 1-Touch Pwr Top)

### Exterior Mirrors

- Black Exterior Mirrors
- Power-Heated Mirrors

### Doors

- Black Door Handles
- Front Door Tinted Glass
- Full Doors with Roll-up Windows

### Lighting

- Automatic Headlamps
- Center High-Mounted Stop Lamp
- Courtesy Lamps
- Front Dome with On / Off Switch Lamp
- Front Fog Lamps
- Front Side Marker / Side Repeater Lamp
- Incandescent Tail Lamps
- Rear Dome with On / Off Switch Lamp

### Bumpers & Fascias

- Molded Black Front Bumper
- Molded Black Rear Bumper

### Grilles

- Body-Color Grille

### Wiper Systems

- Variable Intermittent Windshield Wipers

### Exterior Design

- "Jeep" Badge
- "Sport" Badge
- "Trail Rated" Badge
- Accent Color Fender Flares
- Black Front Frame Overlay
- Black Fuel-Filler Bezel
- Non-Locking Fuel-Filler Cap
- Tethered Fuel-Filler Cap

### Additional Exterior Features

- Body-Color Sport Bar

---

## SEATING & TRIM

## Seat Types

- Cloth Seats with Adjustable Head Restraints

## Seating Configurations

- Manual 4-Way Front Passenger Seat

## Seat Features

- Driver Height Adjuster Seat
- Low-Back Bucket Seats
- Manual 2-Way Adjustable Lumbar Driver Seat
- Manual 6-Way Driver Seat
- Occupant Classification System
- Rear 60 / 40 Folding Seat
- Reclining Front Seats
- RR Head Restraints Outboard Seating
- Three Rear Seat Head Restraints

---

## AUDIO & UCONNECT® MULTIMEDIA

### Sound System Components

- 5.0-Inch Touchscreen Display
- Audio Jack Input for Mobile Devices
- Fixed Long Mast Antenna
- Integrated Voice Command with Bluetooth®
- Media Hub (USB, Aux)
- Remote USB Port
- Steering Wheel Mounted Audio Controls

### Speaker Systems

- 8-Speakers

### Sound Systems

- Uconnect® 3 with 5-Inch Display

---

## INTERIOR FEATURES

### Consoles & Storage

- Cargo Tie-Down Loops
- Full-Length Floor Console
- Rear Compartment Storage Tray
- Rear Seat / Wheelhouse / Cargo Carpet
- Storage Tray

### Windows & Locks

- Power Windows with Front One-Touch-Down Feature
- Speed Sensitive Power Locks

### Floor Mats

- Front and Rear Floor Mats

### Interior Design



- 120 MPH Primary Speedometer
- Base Interior Accents
- Cluster 3.5-Inch TFT B&W Display
- Front Seat Area Carpet
- Leather-Wrapped Steering Wheel
- Silver Platinum Instrument Panel Bezels

#### Additional Interior Features

- 12-V Auxiliary Power Outlet
- 12-Volt Rear Auxiliary Power Outlet
- Cruise Control
- Front Seat Back Map Pockets
- Hood Insulation
- Illuminated Cup Holders
- Locking Glove Box
- Passenger Assist Handles
- Sun Visors with Illuminated Vanity Mirrors
- Urethane Shift Knob

## TOTAL OF ADDED OPTIONS

**\$10,260**

<b>PAYMENT SUMMARY</b>	<b>Buy</b>	<b>Lease</b>
Monthly Payment	\$786	\$377
MSRP*	\$34,745	\$34,745
Added Options	\$10,260	\$10,260
Destination Charges	\$1,495	\$1,495
Down Payment	-\$4,650 (10%)	-\$4,650 (10%)
Term Duration	60 Months	48 Months
Percentage Rate (APR)	4.78%	5.352%
Estimated Selling Price	\$41,850	-
Estimated Capitalized Costs	-	\$41,850

\*MSRP excludes destination, taxes, title and registration fees. Starting at price refers to the base model, optional equipment not included. A more expensive model may be shown. Pricing and offers may change at any time without notification. To get full pricing details, see your dealer.

**03-21-19**

DATE