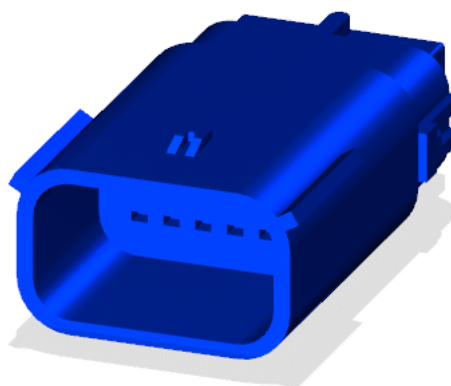
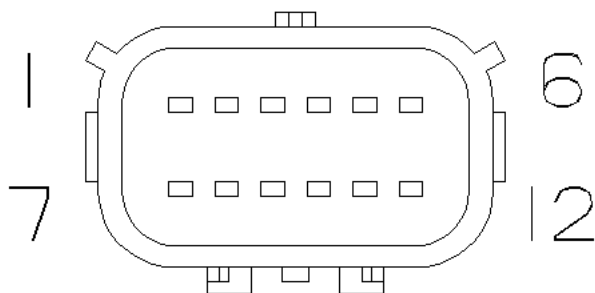
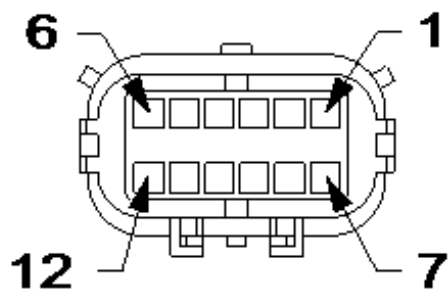


LAMP-ASSEMBLY TAIL-LEFT**Harness Family:** Body**Color:** BLACK**Gender:** MALE**Part Number:** 33482-1201**Part Description:** STANDARD CONNECTOR BLADE 2ROW HOUSING**Connector No:** D6641A**Option:** Standard**Repair Kit Part Number:** 68364268AA**Cavity Count:** 12**Available Views:** [Location View](#)**Mating Side:****Isometric View:****Wire Insertion Side:**



NOTE: When connector cavities are identified as "NO CONNECT" in the following table, there may be "Dummy (blunt cut) wires" or Cavities may be "Open", "Plugged, or "Flashed over" depending on vehicle option content.

Pin	Circuit	Wire Color	Gauge/Size	Function	Option
1	L9	YE	0.75	LEFT STOP/TURN FEED	BASE LIGHTING EXCEPT EXPORT
1	L52	WH	0.75	LEFT STOP LAMP DRIVER	BASE LIGHTING EXPORT
1	L9	YE	0.75	LEFT STOP/TURN FEED	PREMIUM LIGHTING EXCEPT EXPORT
1	L52	WH	0.75	LEFT STOP LAMP DRIVER	PREMIUM LIGHTING EXPORT
2	L145	WH/OG	0.75	LEFT SIDE MARKER CONTROL	
3	L63	WH/DG	0.75	LEFT REAR TURN LAMP DRIVER	BASE LIGHTING EXPORT
3	L63	WH/DG	0.75	LEFT REAR TURN LAMP DRIVER	PREMIUM LIGHTING EXPORT
4	L71	WH/GY	0.75	LEFT REAR PARK LAMP DRIVER	PREMIUM LIGHTING EXCEPT EXPORT
4	L71	WH/GY	0.75	LEFT REAR PARK LAMP DRIVER	BASE LIGHTING EXCEPT EXPORT
4	L71	WH/GY	0.75	LEFT REAR PARK LAMP DRIVER	BASE LIGHTING EXPORT
4	L71	WH/GY	0.75	LEFT REAR PARK LAMP DRIVER	PREMIUM LIGHTING EXPORT
5	L15	WH/BG	0.75	LEFT BACKUP LAMP DRIVER	PREMIUM LIGHTING EXPORT
5	L15	WH/BG	0.75	LEFT BACKUP LAMP DRIVER	BASE LIGHTING EXCEPT EXPORT
5	L15	WH/BG	0.75	LEFT BACKUP LAMP DRIVER	BASE LIGHTING EXPORT
5	L15	WH/BG	0.75	LEFT BACKUP LAMP DRIVER	PREMIUM LIGHTING EXCEPT EXPORT
6	Z915	BK	0.75	GROUND	
7	Z915	BK	0.75	GROUND	
8	L563	WH/GY	0.35	LEFT REAR LIGHTING FAULT SENSE	PREMIUM LIGHTING EXPORT
8	L563	WH/GY	0.35	LEFT REAR LIGHTING FAULT SENSE	PREMIUM LIGHTING EXCEPT EXPORT
9	F923	PK/YE	0.35	RUN RELAY CONTROL	PREMIUM LIGHTING EXPORT
9	F923	PK/YE	0.35	RUN RELAY CONTROL	PREMIUM LIGHTING EXCEPT EXPORT
10	D215	DB/WH	0.35	CAN IHS (+)	PREMIUM LIGHTING EXCEPT EXPORT
10	D215	DB/WH	0.35	CAN IHS (+)	PREMIUM LIGHTING EXPORT
11	D216	WH	0.35	CAN IHS (-)	PREMIUM LIGHTING EXPORT
11	D216	WH	0.35	CAN IHS (-)	PREMIUM LIGHTING EXCEPT EXPORT
12	P711	GN	0.35	LEFT BLIND SPOT INDICATOR DRIVER	PREMIUM LIGHTING EXCEPT EXPORT
12	P711	GN	0.35	LEFT BLIND SPOT INDICATOR DRIVER	PREMIUM LIGHTING EXPORT