

LAMP-ASSEMBLY-RIGHT FRONT C1

Harness Family: Dash
Color: BLACK
Gender: FEMALE
Part Number: 33472-0601

Part Description:

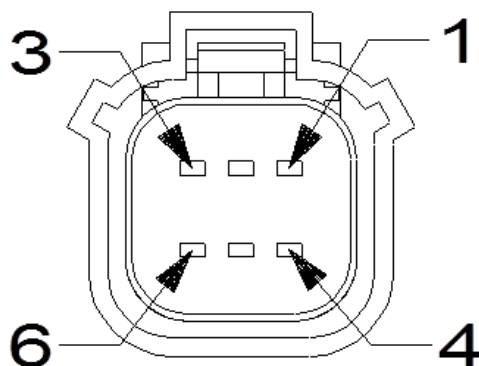
Connector No: D6606A
Option: Standard

Repair Kit Part Number: 68225123AA

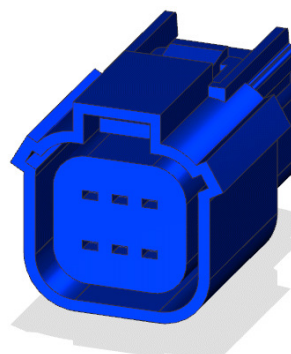
Cavity Count: 6

Available Views: [Location View](#)

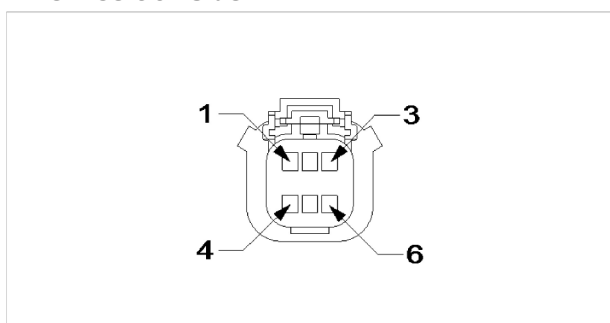
Mating Side:



Isometric View:



Wire Insertion Side:



NOTE: When connector cavities are identified as "NO CONNECT" in the following table, there may be "Dummy (blunt cut) wires" or Cavities may be "Open", "Plugged, or "Flashed over" depending on vehicle option content.

Pin	Circuit	Wire Color	Gauge/Size	Function	Option
1	Z904	BK	1.5	GROUND	
2	L44	WH/BG	1.5	RIGHT LOW BEAM DRIVER	
3	N0	NA	0	NO CONNECT	
4	L34	WH/GY	2.0	RIGHT HIGH BEAM DRIVER	



Pin	Circuit	Wire Color	Gauge/Size	Function	Option
5	N0	NA	0	NO CONNECT	EXCEPT EXPORT BASE
5	L118	BG/OG	0.50	RIGHT FRONT PARK LAMP DRIVER	EXCEPT EXPORT PREMIUM
5	N0	NA	0	NO CONNECT	EXPORT
6	N0	NA	0	NO CONNECT	