

LAMP-ASSEMBLY-LEFT FRONT C1

Harness Family: Dash
Color: BLACK
Gender: FEMALE
Part Number: 33472-0601

Part Description:

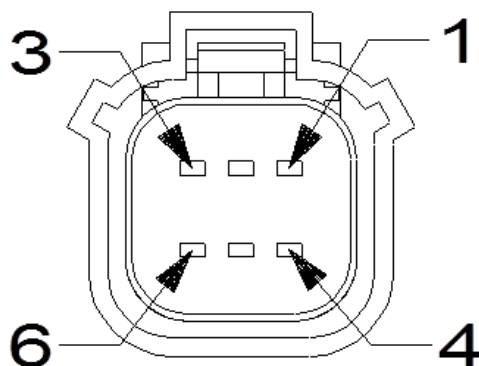
Connector No: D6605A
Option: Standard

Repair Kit Part Number: 68225123AA

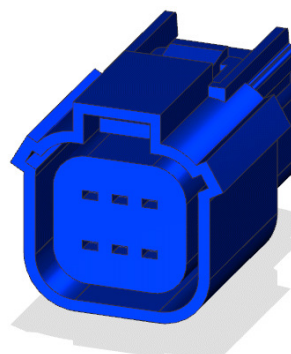
Cavity Count: 6

Available Views: [Location View](#)

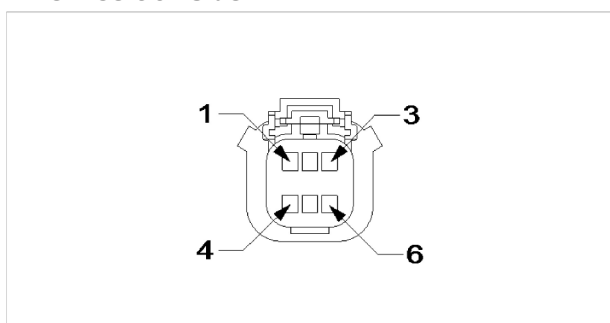
Mating Side:



Isometric View:



Wire Insertion Side:



NOTE: When connector cavities are identified as "NO CONNECT" in the following table, there may be "Dummy (blunt cut) wires" or Cavities may be "Open", "Plugged, or "Flashed over" depending on vehicle option content.

| Pin | Circuit | Wire Color | Gauge/Size | Function | Option |
|-----|---------|------------|------------|-----------------------|--------|
| 1 | Z905 | BK | 1.5 | GROUND | |
| 2 | L43 | WH/DB | 1.5 | LEFT LOW BEAM DRIVER | |
| 3 | N0 | NA | 0 | NO CONNECT | |
| 4 | L33 | WH/GN | 2.0 | LEFT HIGH BEAM DRIVER | |



| Pin | Circuit | Wire Color | Gauge/Size | Function | Option |
|-----|---------|------------|------------|-----------------------------|--------|
| 5 | L117 | BG/DB | 0.50 | LEFT FRONT PARK LAMP DRIVER | |
| 6 | N0 | NA | 0 | NO CONNECT | |