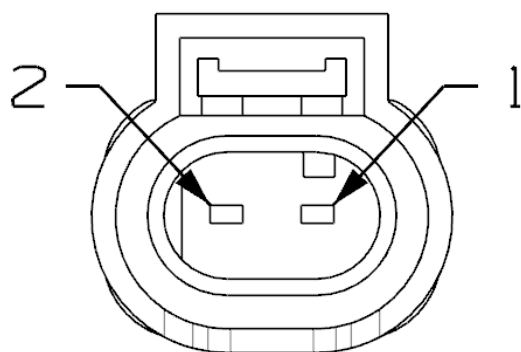
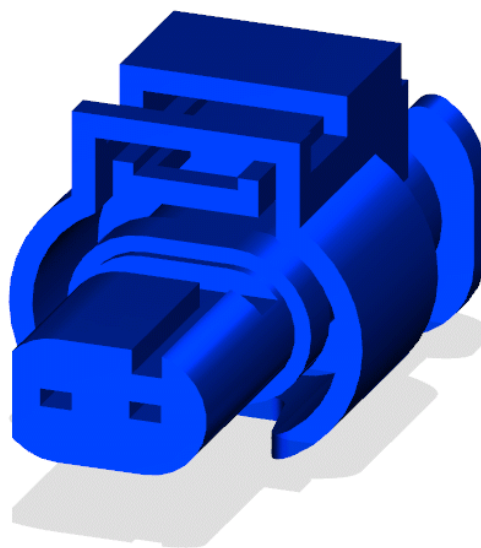
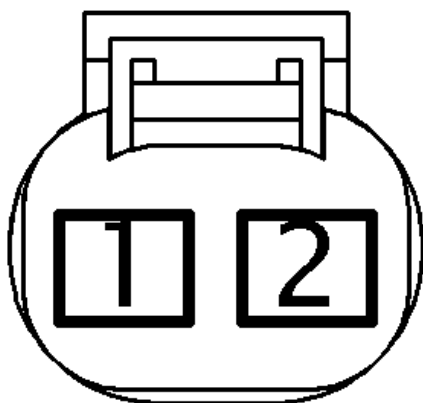


LAMP-LICENSE**Harness Family:** REAR BUMPER**Color:** BLACK**Gender:** FEMALE**Part Number:** 872-857-571**Part Description:****Connector No:** D4544A**Option:** EXCEPT EXPORT**Repair Kit Part Number:** 68137868AA**Cavity Count:** 2**Available Views:** [Location View](#)**Mating Side:****Isometric View:****Wire Insertion Side:**



NOTE: When connector cavities are identified as "NO CONNECT" in the following table, there may be "Dummy (blunt cut) wires" or Cavities may be "Open", "Plugged, or "Flashed over" depending on vehicle option content.

Pin	Circuit	Wire Color	Gauge/Size	Function	Option
1	Z919	BK	0.35	GROUND	CLASS II HITCH
1	Z915	BK	0.35	GROUND	EXCEPT CLASS II HITCH
2	L3	WH/DB	0.50	LICENSE PLATE LAMP DRIVER	